

Patterson-Kelley Continuous Zig-Zag Blender

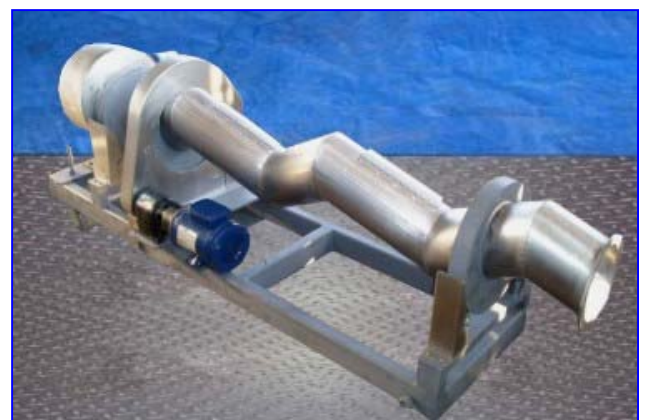
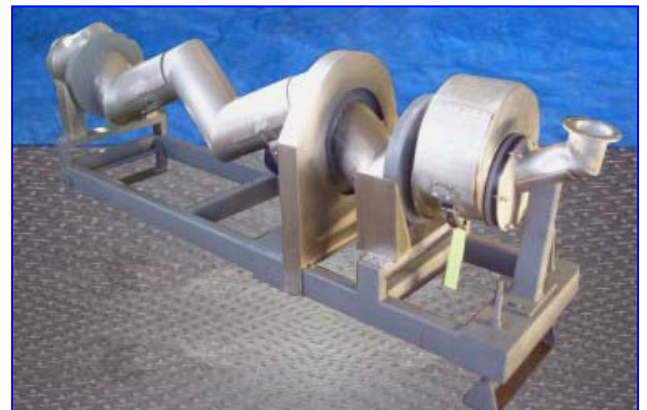
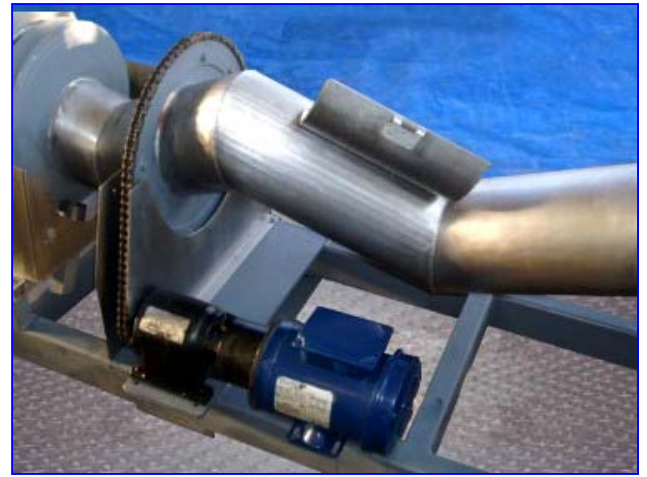
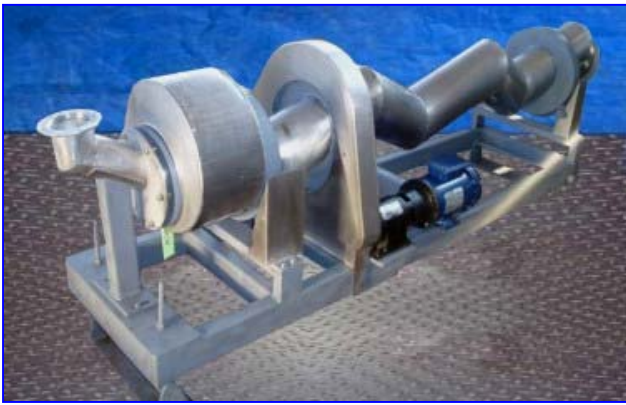
Mfg: Patterson-Kelley

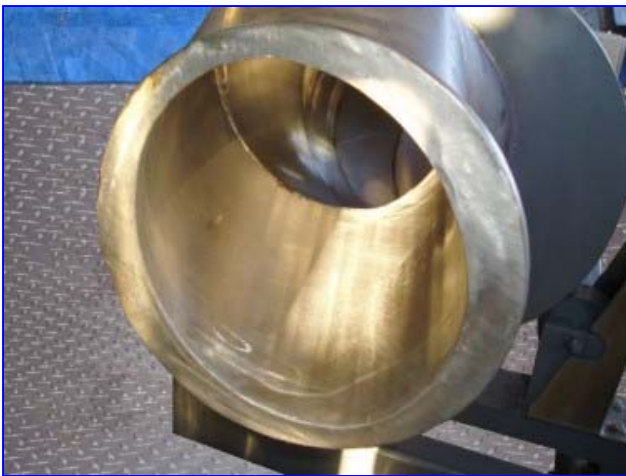
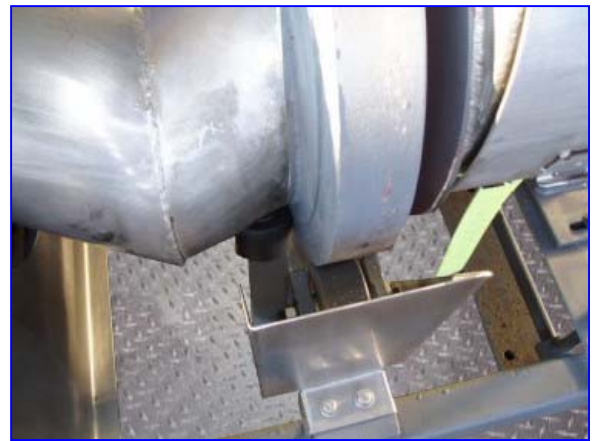
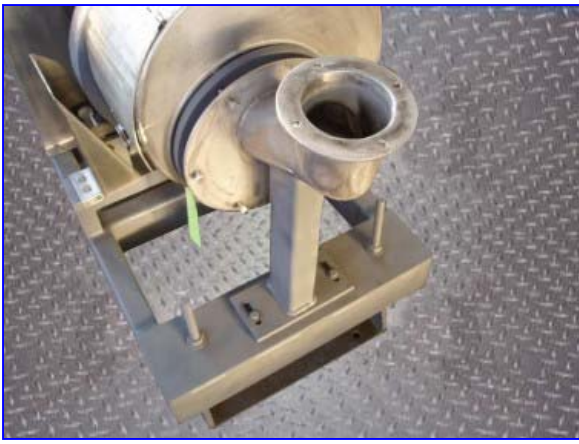
Model:

Stock No. 75.Q013

Serial No.

Patterson-Kelley Continuous Zig-Zag Blender. Provides the precision of the P-K Twin-Shell Blender on a continuous basis. Produces precise, intimate blends of solids-solids, liquid-solids, and slurries. Short residence times ensure the gentle processing of materials. Continuous operation for high volume production. Engineered systems facilitate efficient feeding and discharging of material. Stainless steel blender features (3) side access doors. Reliance Electric Motor, 1.5 hp, 3450 rpm, 208-230/460 V, 4.4-4.4/2.2 amps, 60 Hz, 3 phase. Sew Eurodrive Motor Drive, 14.08 ratio, 245.03 rpm (final). Inlets: (1) 4 in. dia. infeed with a 6 in. dia. flange and (4) 3/8 in. dia. attachment holes at a center-to-center distance of 5 in. Outlets: (1) 8 in. dia. discharge. Overall dimensions: 9 ft. 3 in. L x 27 in. W x 35-1/2 in. H.







[PK](#)

[BOILERS](#)

[WATER HEATERS](#)

[BLENDERS / DRYERS](#)

[PRE-KRETE®](#)

[CONTACT US](#)

BLENDERS

[P-K Batch Blenders](#)

▶ [P-K Continuous Blenders](#)

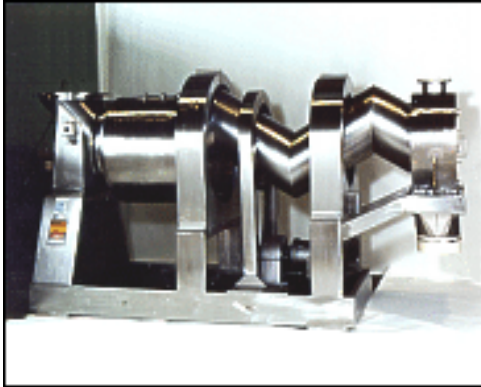
[P-K Batch Dryers](#)

[P-K Continuous Dryers](#)

[P-K Customer Test Lab](#)

[P-K Lab Equipment](#)

[Blenders / Dryers Sales & Service](#)



P-K Continuous Blenders

P-K Zig-Zag® Continuous Blender

- Provides the precision of the P-K Twin-Shell Blender on a continuous basis.
- Produces precise, intimate blends of solids-solids, liquid solids and slurries.
- Short residence times ensure the gentle processing of materials.
- Continuous operation for high volume production.
- Engineered systems facilitate efficient feeding and discharging of material.
- Sizes from 20-5000 cubic feet/hour