

TDA/1-40



Stainless Steel 2/3 Steam Jacketed Kettle

Table Top mounted
Tilting
Direct Steam
Heated
40 quart capacity

Short Form

Groen Model TDA/1-40 quart capacity stainless steel, table top direct steam jacketed kettle per Bulletin 141044. Unit shall have full bottom hemisphere steam jacket with one piece welded construction of Type 304 stainless steel, and sturdy tubular support arms. Reinforced bar rim, with butterfly shaped pouring lip standard. Right side handle for controlled pouring of kettle contents. NSF listed, ASME code constructed and National Board registered. Operates dependably from 5 up to 55 PSI maximum. Integrated steam control valve standard. Steam and condensate connections required. Made in USA.

Description

Kettle shall be Groen Model TDA/1-40 quart stainless steel, 2/3 steam jacketed unit operating from direct steam. per Bulletin 141044 and as follows:

Construction

Kettle proper shall be of 304 stainless steel, solid one piece welded construction. Support arms are heavy chrome plated steel tubing. Rim shall be reinforced with a welded butterfly shaped pouring lip, for pouring control and durability. Kettle shall have a right side handle for controlled pouring of kettle contents, and rear leg which stops kettle in upright position.

Finish

Interior of kettle shall be polished to a 180 emery grit finish. Exterior of kettle shall be finished to a bright high buff finish, ensuring maximum ease in cleaning and maintaining brilliant appearance.

ASME Code

Unit shall be ASME shop inspected, stamped and registered with the National Board for operation up to a maximum working pressure of 55 PSI.

Sanitation

Unit shall be designed and constructed to meet NSF requirements and be NSF listed.

Steam Pressure

Kettles shall operate dependably at any steam pressure between 5 and 55 PSI. Higher working pressure available.

Performance/Features

Handy support arm mounted steam control valve eliminates counter or table top mounted control valves.

Mounting

Kettle shall be mounted on sturdy cast, chrome plated stainless steel arms. The steam supply shall enter through the left kettle support arm, through an integrated steam control valve into the jacket at the rotary joint, down through the support arm. No exposed steam piping shall be on the kettle body.

Installation

Steam trap assembly is required and not provided unless ordered as an option. 3/8" IPS steam inlet and condensate outlet required. Safety valve and remote steam source required.

Options/Accessories

- Steam trap assembly
- TSC table mounting (see Bulletin 141044)
- Cabinet base mounting
- Lutoff cover and basket insert
- 316 stainless steel interior

Origin of Manufacture

Kettle shall be designed and manufactured in the United States.



Applications

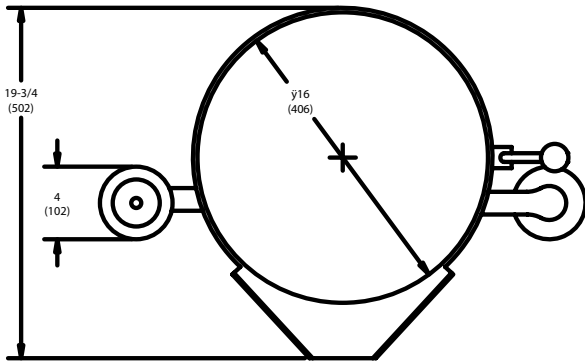
Fresh and Frozen
Vegetables
Gravies
Sauces
Puddings
Soup
Pie Fillings
Pasta
Seafood
Test Kitchen & Laboratory
Applications

TDA/1-40

Stainless Steel
2/3 Steam Jacketed
Kettle

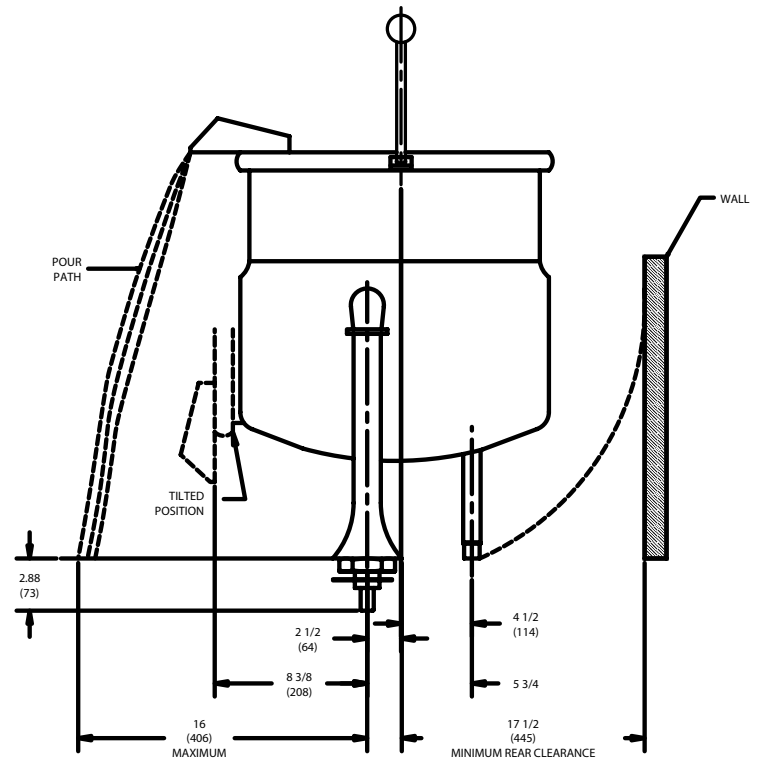
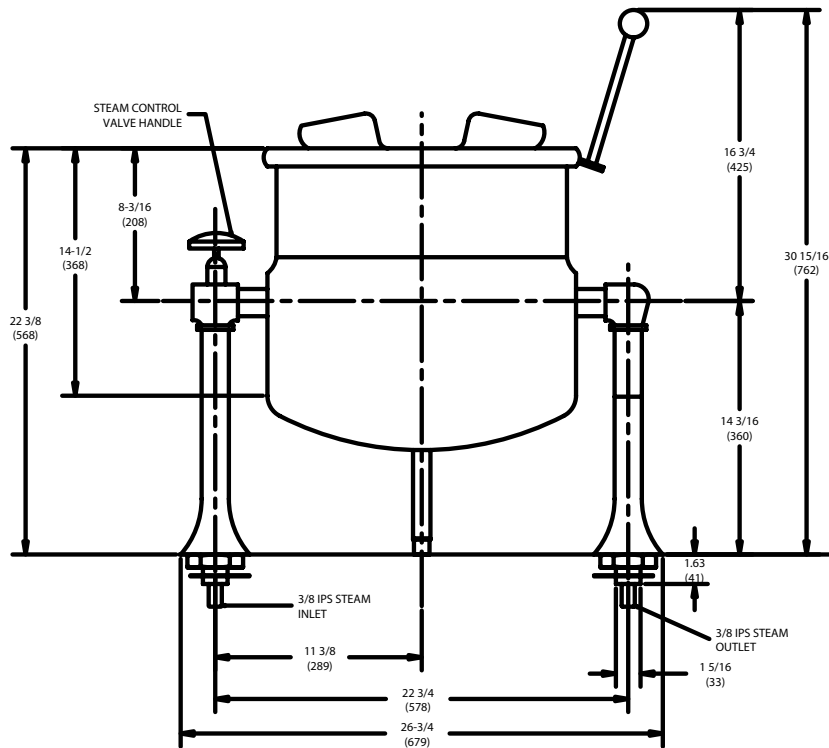


Groen, Unified Brands 888-994-7636, fax 888-266-5244
Information contained in this document is known to be current and accurate at the time of printing/creation. Unified Brands recommends referencing our product line websites, unifiedbrands.net, for the most updated product information and specifications.



NOTES:

1. DIMENSIONS ARE IN INCHES; BRACKETS() ARE IN MM.



P/N 141044 (REV A)

