

1992 Quincy Rotary Screw Air Compressor

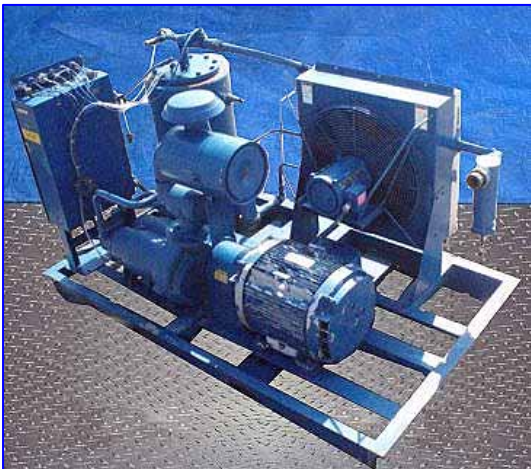
Mfg: Quincy

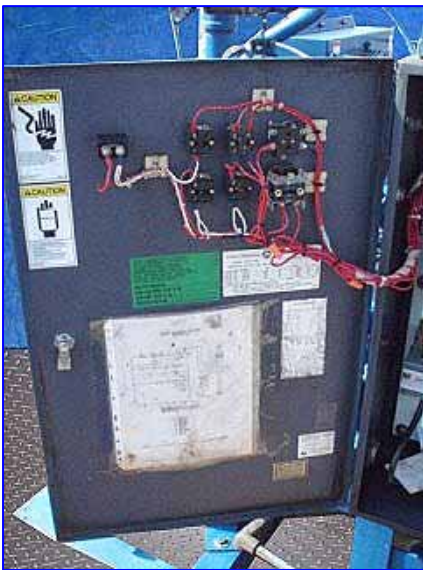
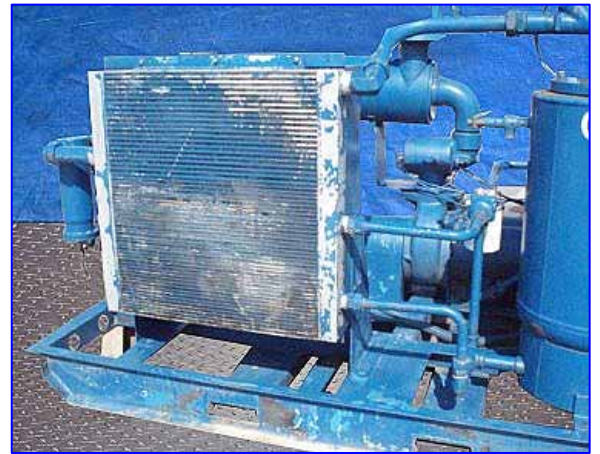
Model: QSI350

Stock No.: JBBF001

Serial No.: 91783 SI03ANA3LH

1992 Quincy Rotary Screw Air Compressor. Model QSI350. S/N: 91783 SI03ANA3LH. S/N and Nat'l Bd: 66357. Flow rate at 100 psi: 350 cfm. MAWP: 225 psi @ 650 °F. MDMT: -20 °F @ 225 psi. General Electric motor, 75 hp, 1730 rpm, 230/460 V, 178.8/88.4 amps, 60 Hz, 3 phase, frame 365TS. (1) 24 in. dia. fan with a General Electric motor, S/N: 5K182AD21013, 3 hp, 1745 rpm, 200-230/460 V, 8.6/4.5 amps, 60 Hz, 3 phase. Quincy Auto-Dual control. Compressor run time: 31,387 hrs. Inlets: (1) 2-1/2 in. dia. bevel. Overall dimensions: 8 ft. L x 4 ft. 8 in. W x 4 ft. 8-1/2 in. H. (ACN227)





STATE OF NORTH CAROLINA

CERTIFICATE OF INSPECTION

DEPARTMENT OF LABOR
BOILER SAFETY BUREAU

COUNTY NO. 343095 COUNTY 099

NATIONAL INSURANCE # 66357



SHOP FEE L - 225
INSPECTION FEE 150

TYPE AIR REC

The pressure equipment described herein may be operated in accordance with the terms described and only at the location specified.

CLASSIFICATION AIR

INSPECTOR NO. 953

OWNER'S NAME AND ADDRESS

CERTIFICATE EXPIRES OCT 2006

VF JEANSWEAR
DIV WRANGLER
P O BOX 2648
MILBURN NC 27894

MANUFACTURER SILVAN YEAR BUILT 1992 COMP #11

LOCATION OF PRESSURE EQUIPMENT

THIS CERTIFICATE SHALL BE PROTECTED FROM THE ENVIRONMENT AND POSTED UNDER GLASS IN A PROMINENT PLACE NEAR THE PRESSURE EQUIPMENT.

[Signature]
INSPECTOR

[Signature]
BOILER SAFETY BUREAU

ISSUED BY JEANSWEAR, 2247 W. HAVY RD. H. MILBURN