

## SASIB juice extractor stainless steel

Mfg:

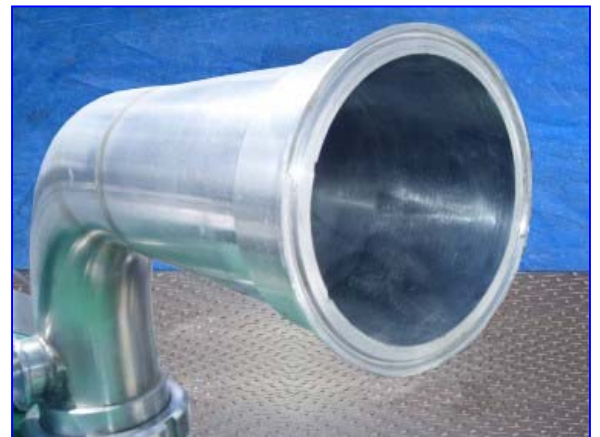
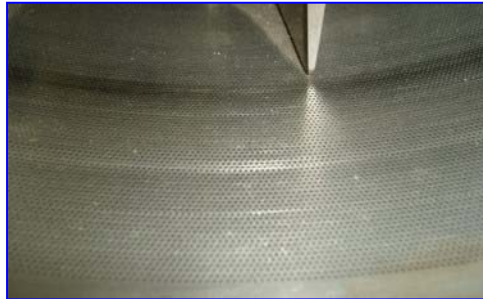
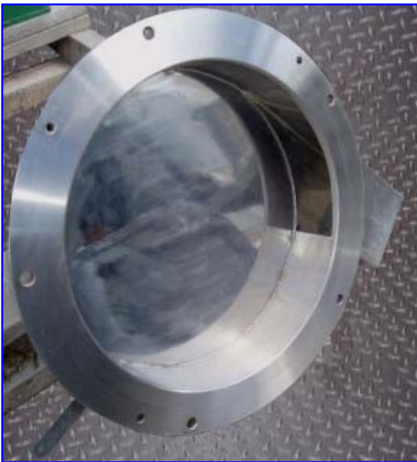
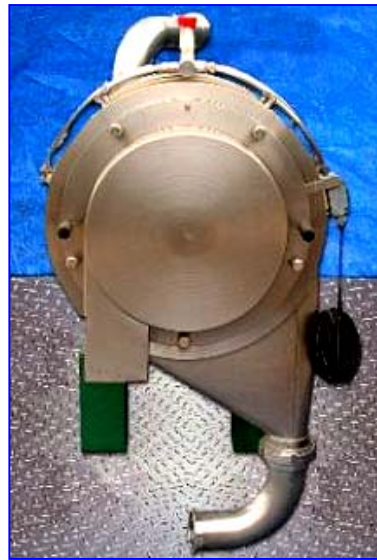
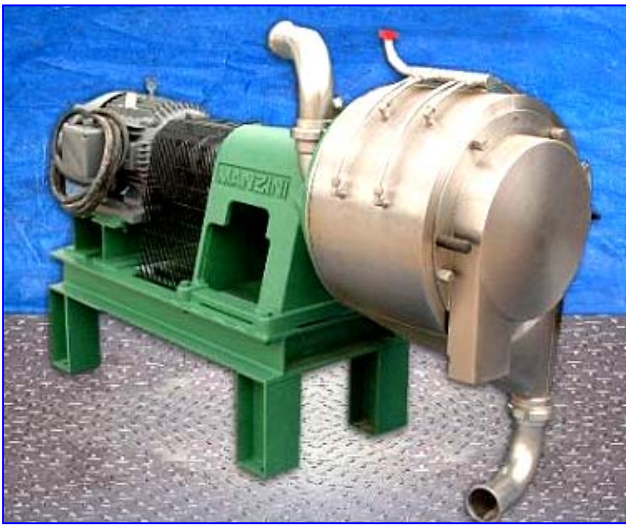
Model: TE-15

Stock No. 95.L51660.40

Serial No. 34653

1993 Sasib Manzini Comaco Juice Turbo Extractor. Model: TE-15, S/N: 34653. Stainless steel. Maximum capacity: approx. 15 tons/hr. Minimum capacity: approx. 0.5 to 5 tons/hr. Mesh size: 20. Product inlets: (1) 4 in., (1) 2 in. Liquid outlet: (1) 4 in. Solids outlet: (1) 6 in x 3-1/2 in. Features 1-1/2 in. inlet that feeds 8 sprayers. Cylindrical chamber measuring 18 in. dia. x 18-1/2 in. L. Chamber contains 4 sets of paddles. Three sets contain 16 paddles and final set contains 8 paddles. Baldor motor: 440 V, 60 Hz, 1170 rpm. Turbo-extractors are specifically designed for extraction and refining of tomato and fruit juices treated with the "Hot Break/Cold Break" technology, as well as, for other fluid-based products requiring separation of liquid from solids. Advantages include juice extraction with no product emulsion, low moisture content of outgoing residues, and high production capacity combined with highly functional versatility. Overall dimensions: 81 in. L x 30 in. W x 52 in. H.





S. B. COMACO  
 S. B. COMACO  
 Parma - ITALY

Modello	TE-12
Matricola n°	34653
11070	
4401	1670

GRUPPO  
**SASIB**  
**MANZINI COMACO**  
 95.L51660.40  
 DIVISIONE FOOD PROCESSING  
 Parma - ITALY

Modello	TE-15
Matricola n°	34653
Anno di fabbricazione	1993