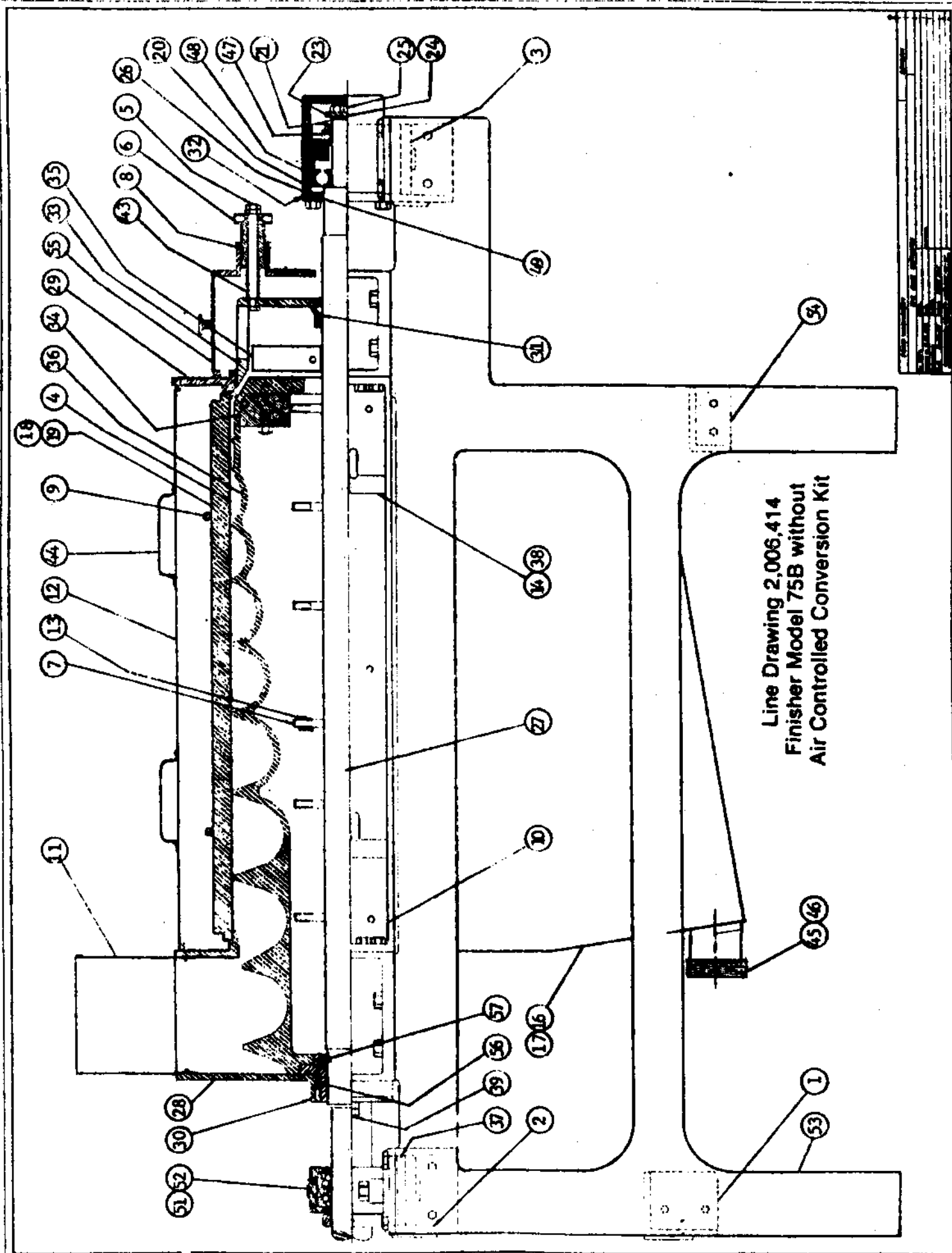


X1. PARTS LIST

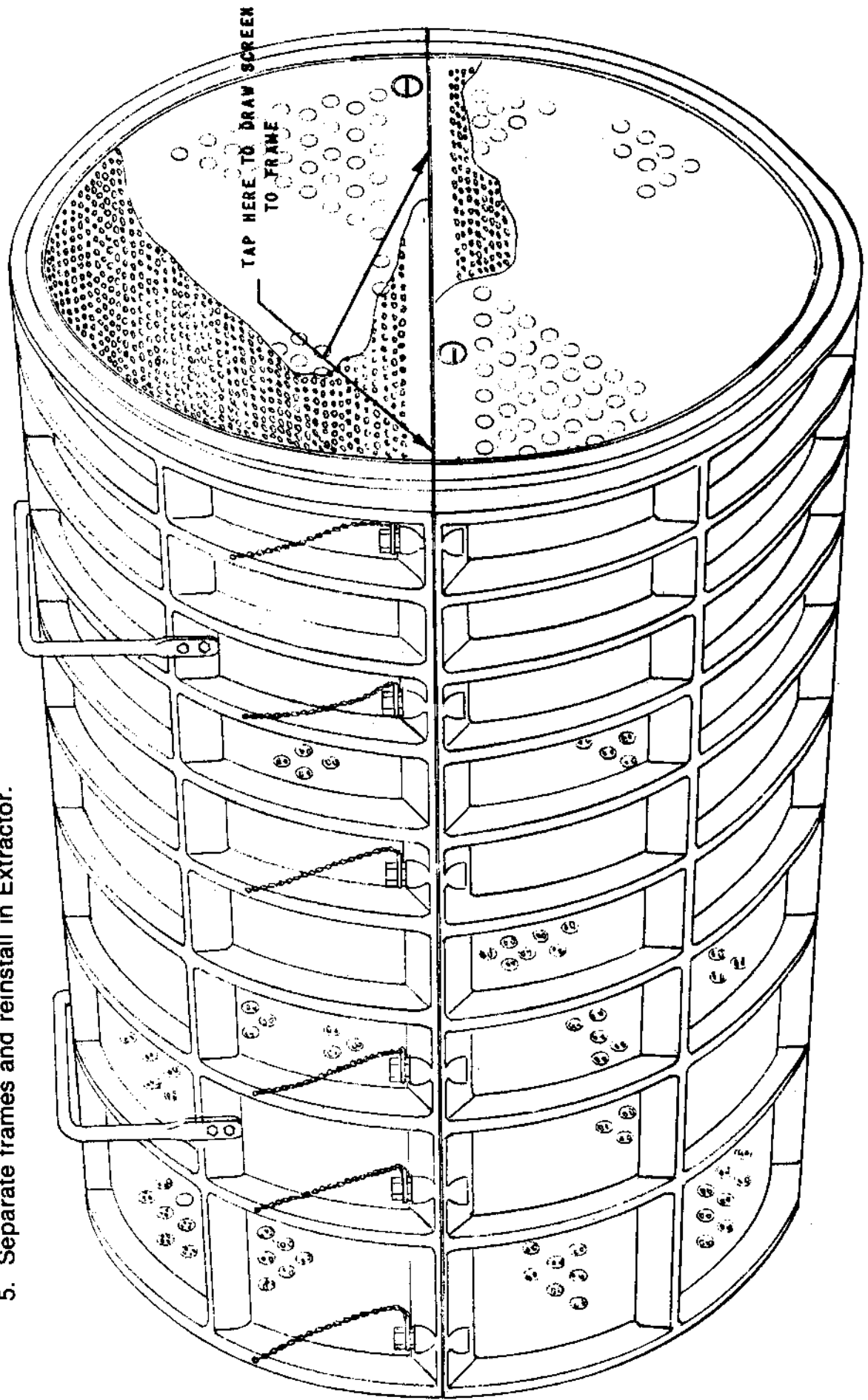
A. PARTS LIST - FINISHERS (ALL MODELS)

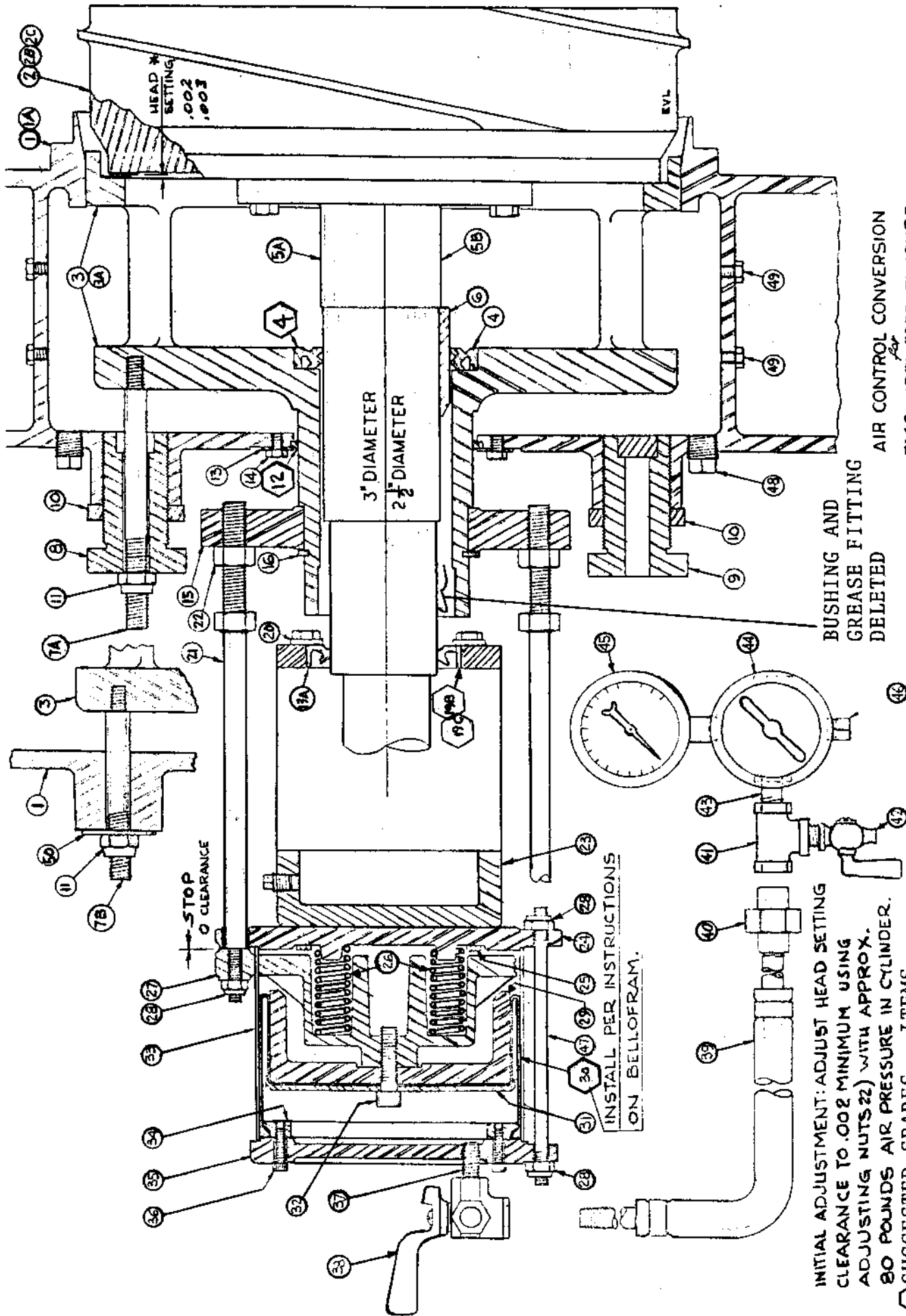
<u>ITEM</u>	<u>PART NO.</u>	<u>DESCRIPTION</u>
1	2,006,253	Lower cross member
2	2,006,254	Top cross member - feed end
3	2,006,255	Top cross member - discharge end
4	2,150,021	.020 perforated screens SS 04903046
	2,150,023	.023 perforated screens SS 04903067
	2,150,022	.027 perforated screens SS 04903058
	2,150,024	.033 perforated screens SS 04901889
	2,150,025	.040 perforated screens SS
	2,150,026	.045 perforated screens SS 9-998-614
	2,150,027	.060 perforated screens SS 9-998-615
	04901221	.023 perforated screens SS for 75CX (dimpled)
	2,150,028	.125 perforated screens SS
	2,150,029	.250 perforated screens SS
5	2,006,269	Spring stud (9-998-576)
6	2,006,270	Adjusting plug (9-998-577)
7	2,006,271	Studs (9-998-583 or 49-2071B) , 1/2" dia x 3-3/16"
8	2,006,272	Lock nuts (9-998-578)
9	2,006,274	Frame handle
10	2,006,277	Side spacing handle (9-998-579)
11	49-526-C	Feed hopper
12	2,006,291	Cover (9-998-580)
13	2,006,295	Screen frame nut 1/2-13 Hvy (004111065)
14	2,006,325	Cover clamp body (9-998-584)
15	2,006,326	Allen head cap screw for cover clamp (9-998-585)
16	49-316-B	Collecting pan 4" outlet
17	49-448-B	Collecting pan 3" outlet
18	2,006,354	Screen frame - lower (009998647)
19	2,006,355	Screen frame - upper (009998648)
20	2,006,364	Bearing box (9-998-588)
21	2,006,365	Spacing collar (9-998-589)
22	2,006,366	Bearing box end cover
23	2,006,367	Laminated shim (9-998-591)
24	2,006,368	Clamp plate (9-998-592)
25	2,006,369	Cap screw (004350898)
26	2,006,372	Garlock sheet gasket (9-998-595)
27	2,006,403	Drive shaft unit 75B only 3" shaft (9-998-597)
28	2,006,405	Feed hopper housing
29	2,006,406	Discharge housing std. tolerance (49-982-F)
30	2,006,407	Packing gland (9-998-598)
31	2,006,408	Sealing cover
32	2,006,409	Bearing box end cover (9-998-599)
33	2,006,410	Stripper 75B std. tolerance (49-923-F, 9-998-600)
34	2,006,411	Counterbalance
35	2,006,413	Pomace breaker 75CX only
36	2,006,415	Extractor screw 75B only 2-1/2" (49-929-F)
37	2,006,416	Shim
38	JU-72-A	Spring for cover clamp (9-998-555)
39	JU-325	Studs for packing gland
40	49-334-C	Adjustable motor base floor mount

<u>ITEM</u>	<u>PART NO.</u>	<u>DESCRIPTION</u>
41	49-739-C	Adjustable motor base side mount 15 HP Frame 284T
42	49-898-C	Adjustable motor base side mount 20 HP Frame 286T
43	JS-369	Stainless steel spring (9-998-543)
44	MHS-54-A	Door pull for cover
45	7-135-024	Tri-Clover sanitary ferrule (for collecting pan) 15A4
46	7-135-023	Tri-Clover sanitary ferrule (for collecting pan) 15A3
47	5-098-104	SKF-910 Ball thrust bearing (non air control only)
48	5-042-025	SKF-6310 Deep groove ball bearing (non air control only)
49	PD-10097	Perfect oil retainer
50	5-103-105	#B-120 V-belts for motor drive
51	**5-098-406	SKF pillow block 2-7/16" shaft or equal (22515CA SKF preferred)
52	*5-098-405	SKF pillow block 1-15/16" shaft, SAF 22611, 3-1/4 H
53	2,006,398	Side frame
54	2,006,399	Lower cross member - discharge end
55	JU-313A	Cover, discharge housing
56	7-530-003	Packing, 5/16" square - Flax with Tallow lubrication (2' req.)
57	2,006,404	Flange, 3" Shaft - 04902842
	04902275	Belt Guard, S.S.
Not shown:		
	005701186	Big sheave
	2,006,447	Packing sleeve (49-518) (used on smaller shafts at the packing end)
	*5-098-431	Bearing, 1-15/16"
	5-098-432	Housing, 1-15/16", LER 24
	5-098-433	Adapter, 1-15/16"
	5-098-428	Seal (ring) alum. 1-15/16", for housing LER24, 1-15/16"
	**5-098-407	Bearing, 2-7/16"
	5-098-411	Housing, 2-7/16", LER 37
	5-098-408	Adapter, 2-7/16"
	5-098-412	Seal (ring) alum. 2-7/16", for housing LER37, 2-7/16"
	4-225-031	Pin, taper, #5 (used to line housing up)
	4-225-034	Pin, taper, #6 (used to line housing up)
	49-2275	Guard, Belt, stn. stl.
	5-150-071	Bushing with hub, Woods F 2-7/16" (used with the big belt sheave)
	5-150-032	Bushing with hub, Browning 2-7/16"
	P00002029	Bushing with hub, Woods F 1-15/16"
	5-150-029	Bushing with hub, Browning R1-15/16 (2-1/2" shaft)



1. Remove screen frame from extractor.
2. Remove old screen and clean frame.
3. Place new screen in frame.
4. Clamp frames together, while out of machine, Tap screens down tight all the way down both sides at joints with plastic hammer. Be sure no bulgy places are left in contour of screen.
5. Separate frames and reinstall in Extractor.





AIR CONTROL CONVERSION
 FMC MODEL 75BD FINISHER
 49-747B

BUSHING AND
 GREASE FITTING
 DELETED

INSTALL PER INSTRUCTIONS
 ON BELLOFRAM.

INITIAL ADJUSTMENT: ADJUST HEAD SETTING
 CLEARANCE TO .002 MINIMUM USING
 ADJUSTING NUTS (22) WITH APPROX.
 80 POUNDS AIR PRESSURE IN CYLINDER.
 SUGGESTED SPARES - ITEMS
 4-12-19B-19C-30