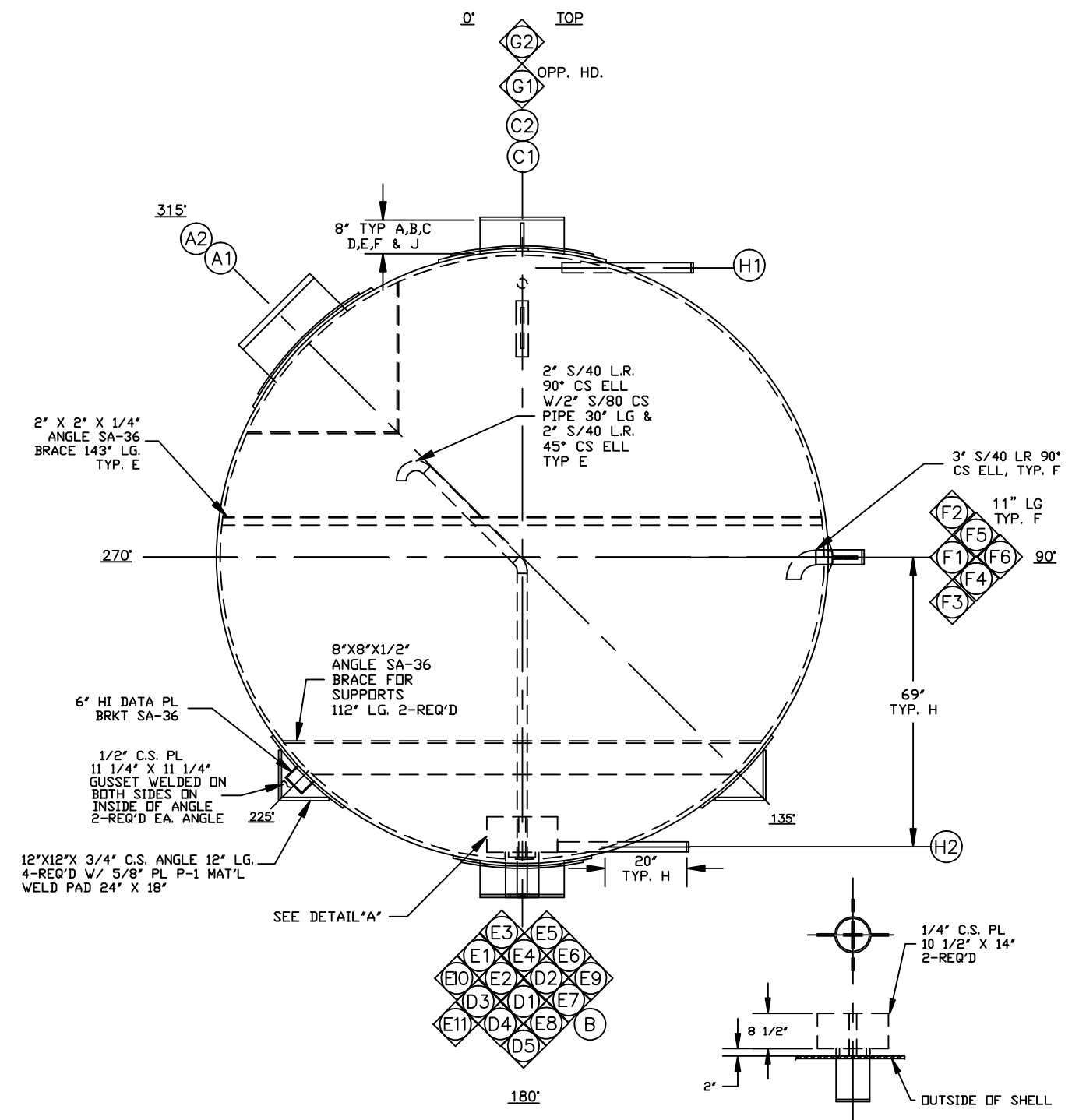
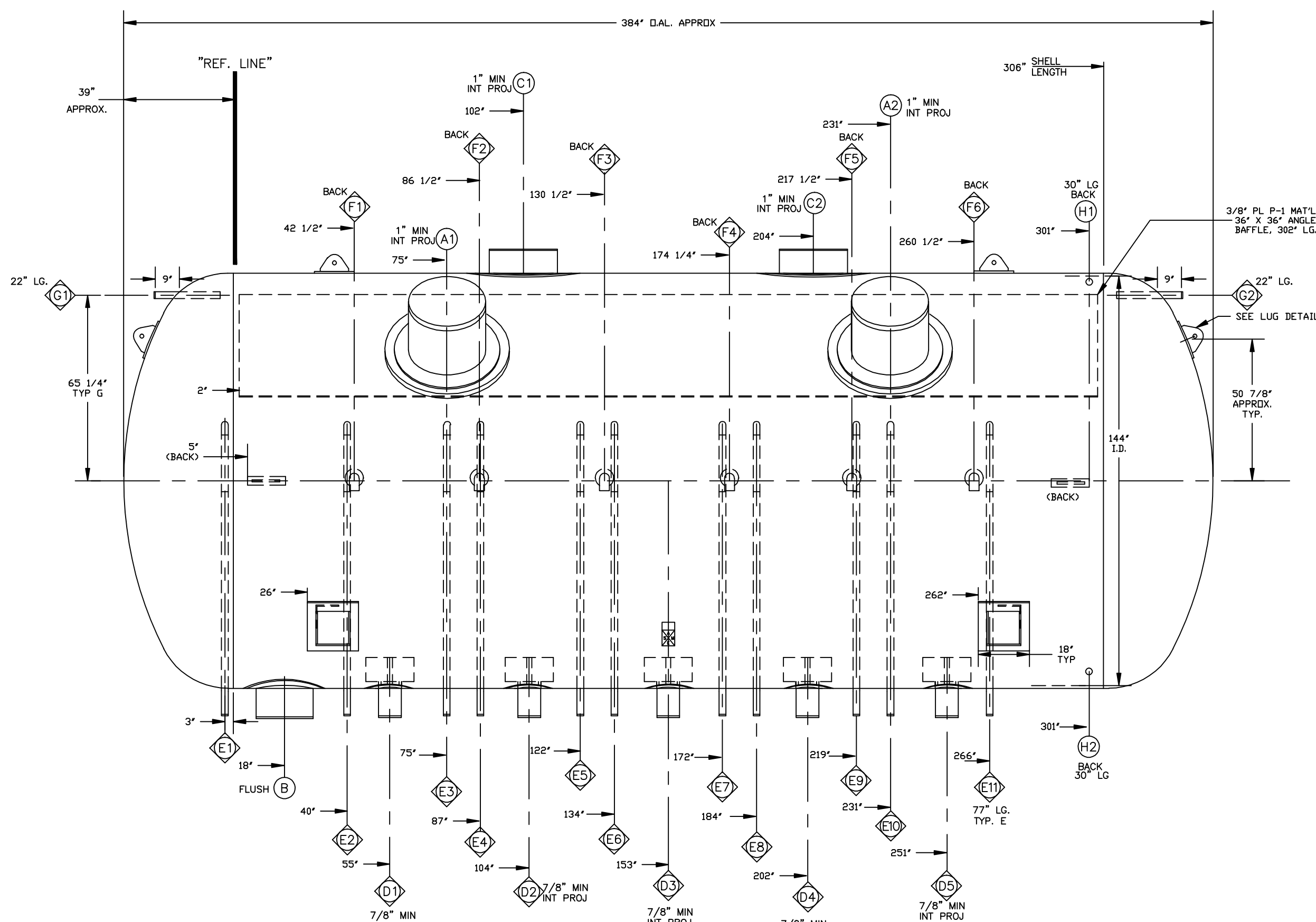
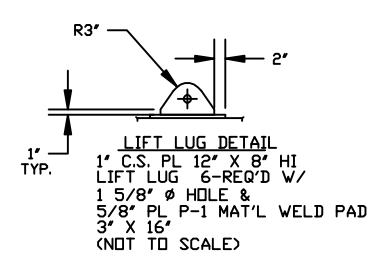
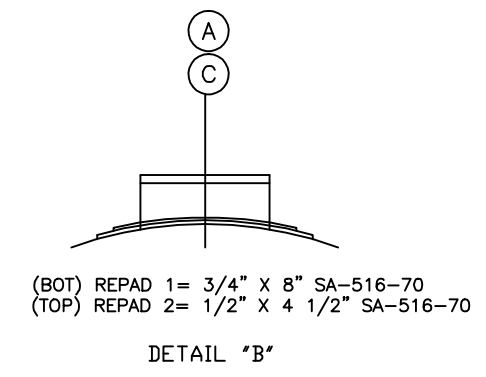
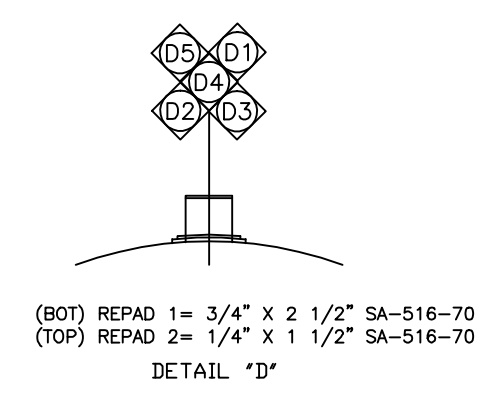
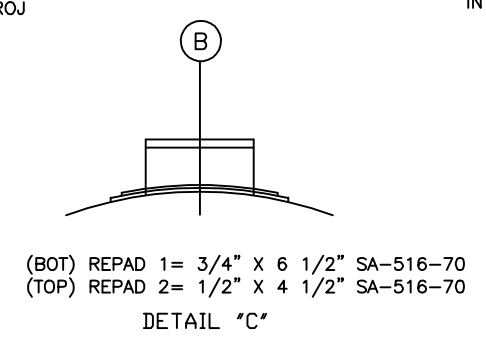


REVISIONS			
REV.	DESCRIPTION	DATE	BY
1	CHANGE O.A.L. FROM 28" TO 32" & NOZZ C TO QUAN. 2	11/9/01	ES
2	OMIT NOZZLE J	11/19/01	ES
3	GENERAL REVISIONS	11/21/01	ES
4	ADDED NOZZ G2, CHANGED NOZZ F TO 3", ADDED BRACES	12/10/01	ES



- NOTES:
1. ALL TAIL DIMENSIONS ARE FROM "REF. LINE".
 2. INSIDE OF VESSEL TO BE FREE OF SLAG, SCALE & RUST.
 3. ALL SHARP EDGES TO BE GROUND SMOOTH.
 4. PAINT 1 COAT SHOP PRIMER.
 5. TOLERANCES PER SHOP PROCEDURE NO. S-402.
 6. SANDBLAST PER E.L.N.C.O. STD.
 7. APPROX. WEIGHT EMPTY: 65000 LBS
 8. NITROGEN CHARGE @ 5 PSI.



CERTIFIED PRINT FOR

JOB No. C-14596

DRN. No. C-14596-J

SERIAL No. 51404

NATL. BD. No. 48651

MARK	SIZE	TYPE	RATING	MATERIAL	QTY.	SERVICE	REINFORCEMENT
H	2"	PIPE	S/160	SA-106-B	2	COLUMN	3/4" X 2" SA-516-70
G	2"	PIPE	S/80	SA-106-B	2	RELIEF	-----
F	3"	PIPE	S/80	SA-106-B	6	LIQ. MAKE UP	3/4" X 1 1/2" SA-516-70
E	2"	PIPE	S/80	SA-106-B	11	VENT	-----
D	8"	PIPE	S/40	SA-106-B	5	PUMP CONN.	SEE DETAIL "D"
C	24"	PIPE	STD. WT	SA-106-B	2	GAS OUTLET	SEE DETAIL "B"
B	20"	PIPE	STD. WT	SA-106-B	1	OIL SUMP	SEE DETAIL "C"
A	24"	PIPE	STD. WT	SA-106-B	2	INLET	SEE DETAIL "B"

NOZZLE SCHEDULE

VESSEL DESIGN SPECIFICATIONS

DESIGNED AND CONSTRUCTED IN ACCORDANCE WITH ASME SECTION VIII, DIV. 1 U STAMP
1998 EDITION & 00 ADDENDA 7-1-00

MAWP: 250 PSI. AT MAX. TEMP. +500° F. MIN. DESIGN METAL TEMP. -20° F AT 250 PSI.
HYDRO TEST AT 328 PSI. RADIOGRAPH: LONG-FULL GIRTH-SPOT EFFICIENCY=100%
SHELL MAT'L: 1" SA-516-70 TYPE: ROLLED PLATE MIN. THK.: .914 C.A.: 0
HEAD #1 MAT'L: 1" SA-516-70 TYPE: 2:1 ELLIP. MIN. THK.: .908 C.A.: 0
HEAD #2 MAT'L: 1" SA-516-70 TYPE: 2:1 ELLIP. MIN. THK.: .908 C.A.: 0

THIS DRAWING AND THE INFORMATION CONTAINED HEREIN ARE THE EXCLUSIVE PROPERTY OF E.L. NICKELL CO. INC. CONSTANTINE, MICHIGAN. IT MAY NOT BE DISTRIBUTED TO ANY OTHER FIRM OR PARTY WITHOUT WRITTEN AUTHORIZATION FROM OUR COMPANY &/OR PURCHASER.
© E.L. NICKELL CO. INC. 1999, 2000

E. L. NICKELL CO., INC.
635 FRANKLIN STREET
CONSTANTINE, MICHIGAN 49042
PHONE: (616) 435-2475
FAX: (616) 435-8216

TITLE: 144" I.D. X 32'-0" O.A.L. HORIZONTAL REFRIGERANT ACCUMULATOR

CUSTOMER: PRESTON REFRIGERATION
P.O.#: 33842

DRAWN BY: ES 10/30/01	ENG. APPROVAL: [Signature]	APPROVED BY: [Signature]
-----------------------	----------------------------	--------------------------

JOB NUMBER: C-14596 SCALE: 1/2"-1'-0" DWG. NUMBER: C-14596-J REV. 4

QUANTITY: 1 SHEET 1 OF 1