

2008 Industrial Service & Fabricators, Inc. Ammonia Recirculator

Mfg: Industrial Service & Fabricators, Inc.

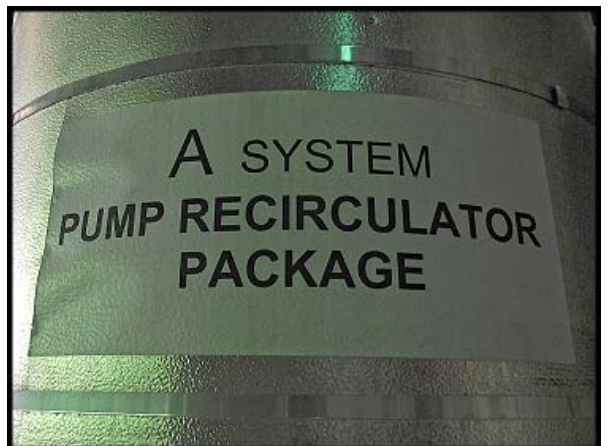
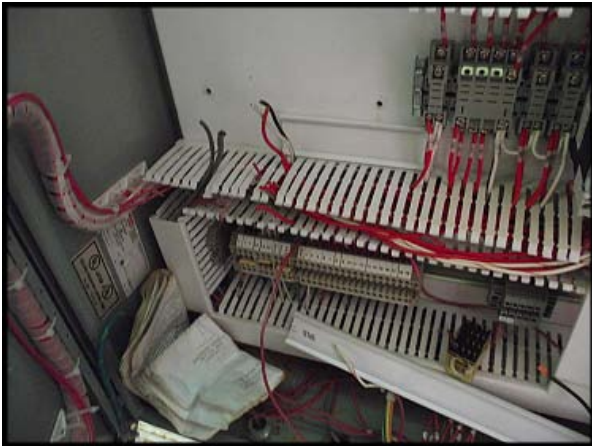
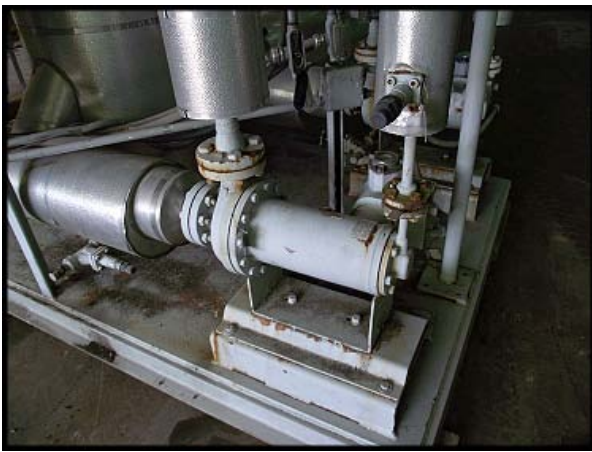
Model:

Stock No: RBIE02.15

Serial No: 08-7742

2008 Industrial Service & Fabricators, Inc. Ammonia Recirculator Package. File: E112410. Job: 8808. Drawing: 8808-1WS. Panel ID: E08-263. SCCR: 5 kva. Voltage: 480/3/60. Service: 25 amps. Largest motor: 4.5 HP. System full load amps: 14.8 amps. Panel enclosure: UL type 4. Vertical ammonia vessel certified by Industrial Service & Fabricators (ISF), Nat'l Bd. no.: 7404, S/N: 08-7742, MAWP: 250 PSIG at 200°F, MDMT -20°F at 250 PSI, year built: 2008, made in USA. Oil pot vessel certified by ISF. Nat'l Bd. no.: 7405, S/N: 08-7743. MAWP: 300 PSIG at 200°F, MDMT -50°F at 300 PSI, year built: 2008, made in USA. Teikoku Motor Pump(s), type R42-217C4DM-0405S1-A, 45 GPM at 138 ft head, 3.4 kW (4.5 HP), 6.8 amps, 460V, 60 Hz, 3-phase, date Nov 2007. Ammonia ports: 6 in. Overall dimensions: 7 ft. 4 in. L x 5 ft. 8 in. W x 18 ft. H.





ISF INDUSTRIAL SERVICES & FABRICATORS, INC.

BURLESON, TEXAS, U.S.A.
 RECIRCULATOR PACKAGE
 FILE# E112410

JOB#8808 SERVICE: 25 AMPS
 SCCR: 5KA PANEL ID# E08-263
 DRAWING# 8808-1WD ENCLOSURE UL TYPE 4
 VOLTAGE: 480/3/60 LARGEST MOTOR: 4.5HP
 SYSTEM FULL LOAD AMPS: 14.8

N 7404

CERTIFIED BY:
 INDUSTRIAL SERVICE & FABRICATORS, INC.
 BURLESON, TEXAS USA

W 250 PSIG AT 200 °F
 MAX. ALLOW. WORKING PRESSURE
 -20 °F AT 250 PSI
 MIN. DESIGN METAL TEMP.
 0 PSIG AT 0 °F
 EXTERNAL PRESSURE
 08-7747 200
 SERIAL NO. YEAR BUILT

ISF INDUSTRIAL SERVICE & FABRICATORS, INC.
 (817) 447-8593
 MADE IN USA

N 7405

CERTIFIED BY:
 INDUSTRIAL SERVICE & FABRICATORS, INC.
 BURLESON, TEXAS USA

W 300 PSIG AT 200 °F
 MAX. ALLOW. WORKING PRESSURE
 -50 °F AT 300 PSI
 MIN. DESIGN METAL TEMP.
 0 PSIG AT 0 °F
 EXTERNAL PRESSURE
 08-7745 2008
 SERIAL NO. YEAR BUILT

ISF INDUSTRIAL SERVICE & FABRICATORS, INC.
 (817) 447-8593
 MADE IN USA

TEIKOKU
 MOTOR PUMP

TYPE R42F217C4DM
 -0405S1-A

ITEM NO.

HEAD 138 X X ft
 CAPA. 4.5 X X gal/min
 3φ 60 Hz 460 V
 OUTPUT 3.4 kW
 AMP. 6.8 A
 POLE CLASS 220
 PROD. NO. F0-1443-5
 DATE JULY 2007

防爆構造
 勞(平) 檢
 第 号
 型式符号

TEIKOKU
 MOTOR PUMP

TYPE R42F217C4DM
 -0405S1-A

ITEM NO.

HEAD 138 X X ft
 CAPA. 4.5 X X gal/min
 3φ 60 Hz 460 V
 OUTPUT 3.4 kW
 AMP. 6.8 A
 POLE CLASS 220
 PROD. NO. F0-1443-6
 DATE JULY 2007

防爆構造
 勞(平) 檢
 第 号
 型式符号