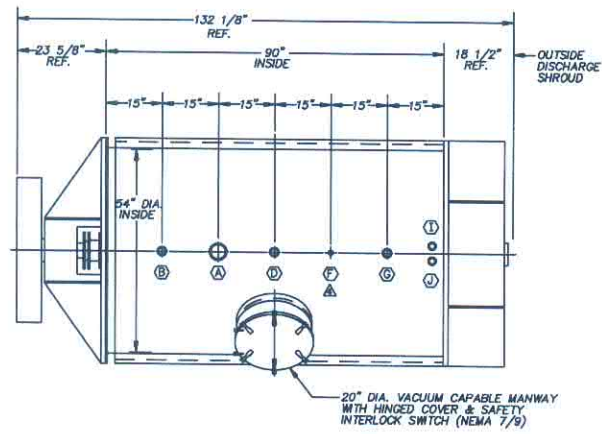


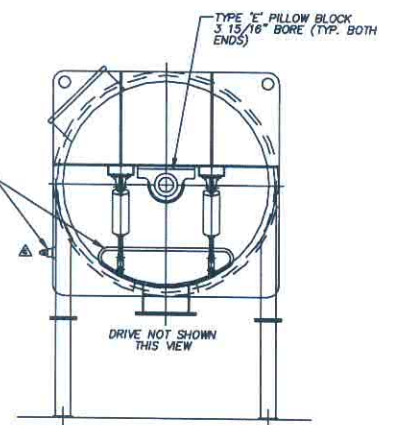
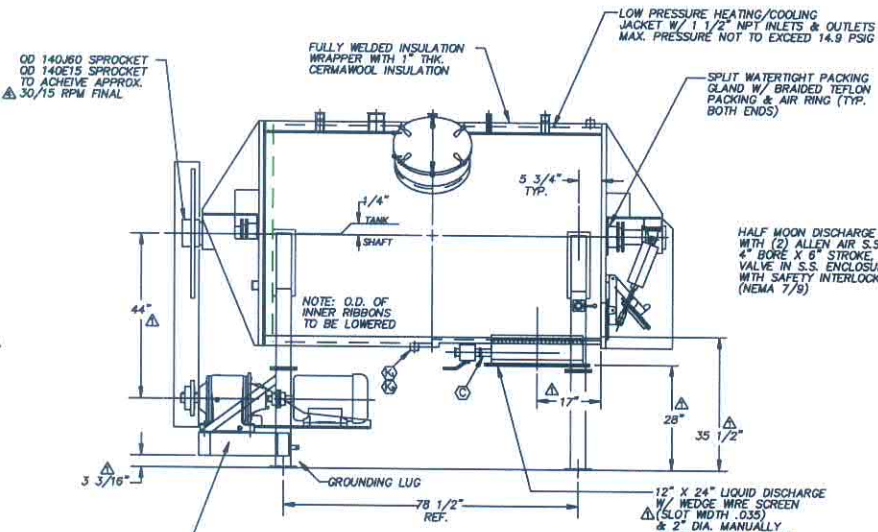
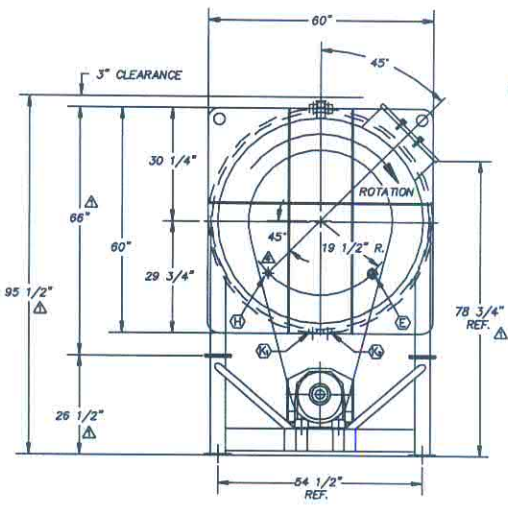
NO.	DATE	BY	DESCRIPTION OF REVISION	CHD BY
Δ	04-05-98	JMS	CHANGES PER CUSTOMER APPROVAL	
Δ	06-21-98	JMS	CORRECTED MOTOR FRAME SIZE - WAS 284T	
Δ	06-10-98	CTS	CHANGED TO 2-SPEED MOTOR	
Δ	06-30-98	JMS	ELIMINATED SPARE SCREEN, LOCATED HAND VALVE, CHANGED PAINT & NOZZLES F & K, & CORRECTED NOTES PER CUST.	

NOTES:
 1) CONSTRUCTION:
 TANK: 3/8" THK. 304SS
 END PLATES: 1 1/4" THK. 304SS
 BEARING PLATES & GUSSETS: 3/8" THK. 304SS
 LOW PRESSURE JACKET: 7 GA. 304SS
 INSULATION WRAPPER: 14 GA. 304SS (2B MILL FINISH)
 SHAFT: 4 1/4" DIA. 304SS
 POSTS: (8) 3/4" THK. 304SS
 PADDLES: 3/8" THK. 304SS (WELDED)
 INNER RIBBONS: 3/8" X 3" 304SS
 CHAIN GUARD: 14 GA. 304SS
 DISCHARGE SHROUD: 12 GA. 304SS
 LEGS: 1/4" X 4" X 4" 304SS
 MOTOR MOUNT: 3/16" X 3" X 6" 304SS
 MOTOR SCOP: 304SS
 2) ALL WELDS ARE CONTINUOUS. ALL INTERNAL WELDS ARE GROUND SMOOTH & POLISHED.
 3) ALL INTERIOR & EXTERIOR SURFACES TO HAVE A CLEANED 2B FINISH.
 4) ALL DRIVE COMPONENTS TO BE PRIMED & PAINTED WITH STEEL-17 EPOXY
 5) TANK TO BE BUILT FOR 27 HG VACUUM OPERATION WITH A LEAK RATE OF LESS THAN 1" HG PER MINUTE.

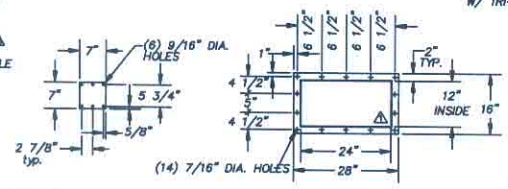


NOZZLE SCHEDULE Δ

MARK	SIZE	TYPE	DESCRIPTION
Δ	4"	TRI-CLAMP FERRULE	VACUUM HOOK-UP
Δ	2"	TRI-CLAMP FERRULE	LIQUID INPUT
Δ	2"	TRI-CLAMP FERRULE	LIQUID OUTPUT
Δ	2"	TRI-CLAMP FERRULE	PRESSURE GAUGE
Δ	2"	TRI-CLAMP FERRULE	THERMOMETER
Δ	3/4"	HALF COUPLING	PRESSURE RELIEF
Δ	2"	TRI-CLAMP FERRULE	VACUUM BREAKER VALVE SET
Δ	1 1/2" W/ 3/4"	HALF COUPLING W/ NYLON BUSHING	STEAM CONTROL PROBE
Δ	1 1/2"	HALF COUPLING	STEAM INLET
Δ	1 1/2"	HALF COUPLING	STEAM INLET
Δ	1 1/2"	HALF COUPLING	CONDENSATION OUTLET
Δ	1 1/2"	HALF COUPLING	CONDENSATION OUTLET



EURODRIVE REDUCER #R922
 14.75:1 RATIO CLASS II, 110 RPM
 OUTPUT WITH SIEMENS 20/10 HP Δ
 1800/900 RPM 480V/60/3 TEXP
 2-SPEED CONSTANT TORQUE SINGLE
 WINDING 284T FRAME MOTOR
 & FALK HIGH SPEED COUPLING
 (COUPLING GUARD SUPPLIED
 BUT NOT SHOWN.)



EIRICH
AMERICAN PROCESS SYSTEMS
 8033 RYAN ROAD, GURNEE, IL 60031

STANDARD PROCESS INC.				
SCALE: 3/4"=1'0"				
DATE: 2/28/98				
JOB REF NO:				
DRAWN BY: P. AUGER				
JOB SERIAL: 1 0 206				
DATE: 2/28/98				
JOB SERIAL: 1 0 201				
CPRB-90 PADDLE/RIBBON BLENDER				
GENERAL ARRANGEMENT				
DRAWING NUMBER: 4537				REV. Δ
W	G	F	B	P
3	5	0	0	0
3	4	0	0	3