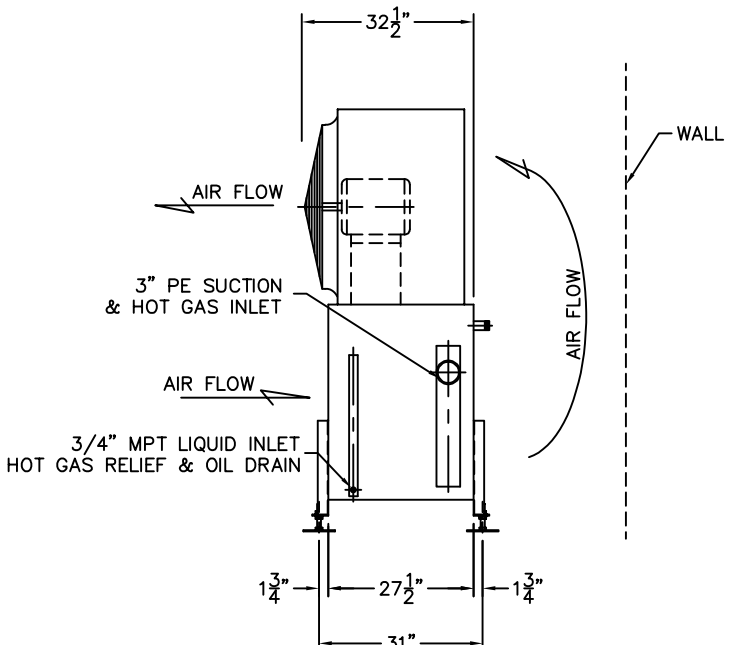
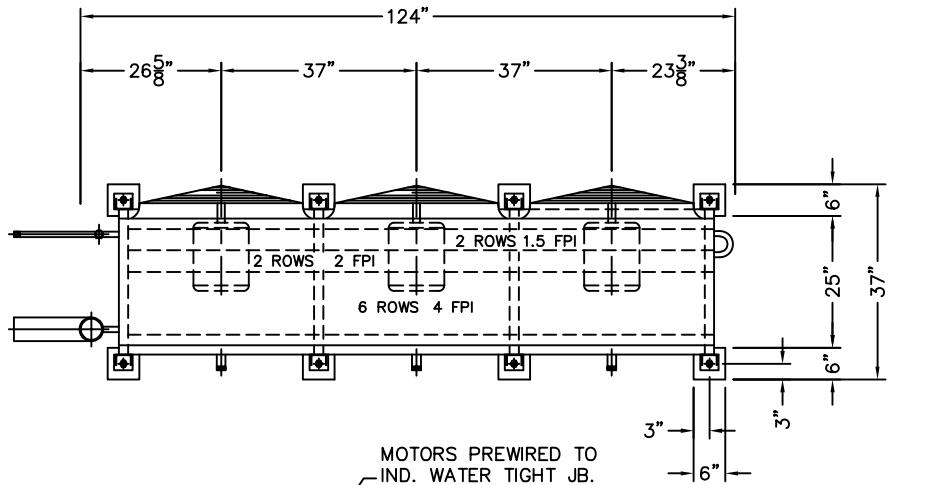


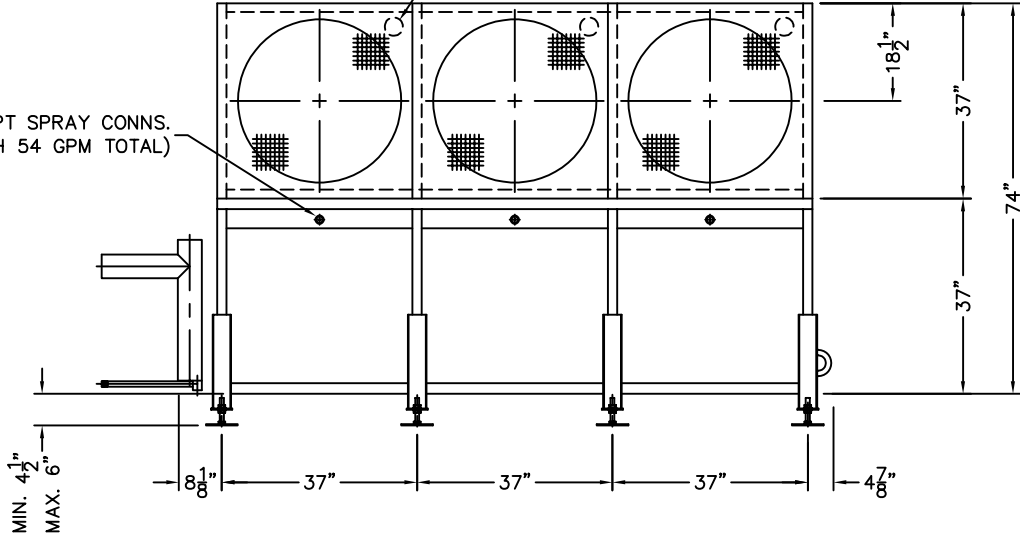
NOTE: MINIMUM HOT GAS PRESSURE AT COIL INLET IS 125 PSIG

LIQUID FEED DATA:
 2.3 GPM LIQUID AT SUCTION TEMPERATURE PUMPED TO
 1.4 PSIG ABOVE SUCTION PRESSURE AT LIQUID INLET.

THIS UNIT IS NOT DESIGNED TO SUPPORT
 ANY ADDITIONAL PIPING OR VALVES.



(3) 1-1/4" MPT SPRAY CONNS.
 (18 GPM EACH 54 GPM TOTAL)



STANDARD UNIT DATA:

CASING: STAINLESS STEEL SHEET
 COIL CONSTRUCTION: HOT DIP GALVANIZED STEEL
 DESIGN PRESSURE: 250 PSIG
 SHIPPING WEIGHT: 3,500 LBS.
 NUMBER OF UNITS: 1 LH
 COIL VOLUME: 5.19 CU. FT.

PERFORMANCE DATA:

13 TONS
 -49 SUCTION TEMPERATURE (°F)
 -38.2 ROOM TEMPERATURE (°F)
 22,973 CFM AIR FLOW
 1/2" EXTERNAL STATIC (IN WATER)
 460-3-60 MOTOR VOLTAGE
 3 MOTOR QUANTITY (PRE. EFF. VFD.)
 5 MOTOR HORSEPOWER
 1750 MOTOR SPEED (RPM)
 6.0 MOTOR FLA EACH
 NH3 REFRIGERANT

C	REVISED PER CUSTOMER REQUEST	12/6/00	BEF
B	REVISED PER CUSTOMER REQUEST	11/29/00	BEF
A	REVISED PER CUSTOMER REQUEST	11/27/00	BEF
LTR	DESCRIPTION	DATE	BY

REVISIONS
 DO NOT SCALE PRINT WORK TO DIMENSIONS ALL DIMENSIONS ARE ± 1/2"



IMECO SO# 28160	FRICK SO# 213431
CUSTOMER PO# 21920	
CUSTOMER: WEST ONE AND ASSOC.	
MODEL: P/F COIL AND FAN ASSY	
DRAWN BY: TTS	DATE: 11/10/00
DRAWING #: 281600100	PAGE: 1 OF 1
UNIT TAG: 18872	