

**Paul Mueller Dedert Dimpled Jacketed Vacuum Tank - 4,000 Gallons**

**Mfg: Paul Mueller**

**Model:**

**Stock No: SABE095.15**

**Serial No: 120908**

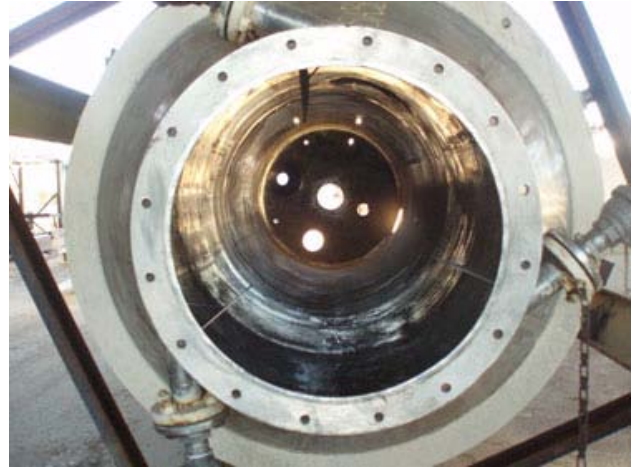
Paul Mueller Dedert Dimpled Jacketed Tank. Approximate capacity: 4000 gallons. S/N: 120908. Job No: 72-1332-1. Nat'l Bd: 1958. Constructed of 316 stainless steel. Inside dimensions: 72 in. dia x 20 ft. Long. Vessel MAWP @ 275°F: 0 psi. Heat transfer surface MAWP @ 275°F: 30 psi. Tank features an 18 in. dia. manway and a 6 in. dia. sight glass. Inlets: (2) 2 in. dia. female ferrules for jacket, (3) 2 in. dia. with 6 in. dia. flanges and (4) 3/4 in. dia. attachment holes at a center-to-center distance of 5 in., (1) 6 in. NPT with a 1/4 in. dia. injector tube, (1) 10 in. dia. with a 16 in. dia. flange and (12) 3/4 in. dia. attachment holes at a center-to-center distance of 14 in., (1) 13 in. dia. with a 19 in. dia. flange and (12) 3/4 in. dia. attachment holes at a center-to-center distance of 17 in. Outlets: (2) 3/4 in. dia. NPT, (2) 2 in. dia. female ferrule for jacket, (3) 2 in. dia. with 6 in. dia. flanges and (4) 3/4 in. dia. attachment holes at a center-to-center distance of 5 in., (1) 22 in. dia. tank outlet with a 28 in. dia. flange and (16) 3/4 in. dia. holes at a center-to-center distance of 26 in. Overall dimensions: 6 ft. 4 in. L x 6 ft. 4 in W x 28 ft. 6 in. H.

Nameplates read:

- Paul Mueller Company Springfield, Missouri USA. Heat Transfer Surface. Max WP: 30 PSI. Max Temp: 275F. Serial 120908. Year: 1972. Nat'l Bd #1958. U, Div I, W, RES.
- Paul Mueller Company Springfield, Missouri USA. VESSEL. Max WP: 00 PSI. Max Temp: 275F. Serial 120908. Year: 1972. Nat'l Bd #1958. U, Div I, W. Vacuum: 29.92 HG.







PAUL MOOREHEAD COMPANY

SPRINGFIELD, MISSOURI, U.S.A.



HEAT TRANSFER SURFACE

	MAX. W.P.	30	P.S.I.
DIV. I	MAX. TEMP.	275	°F
W	SERIAL	120908	
RES	YEAR	1972	
	NATL. BD.	1958	



PAUL MUELLER COMPANY

SPRINGFIELD, MISSOURI U.S.A.



VESSEL

MAX. W.P.

0

P.S.I.

DIV. I

MAX. TEMP.

275

°F

W

SERIAL

120908

YEAR

1972

NAT'L BD.

1958

VACUUM- 29.921 HG

WALSH STEEL FAB COMPANY

WALSH STEEL FAB COMPANY

VESSEL

MAX. W.P. 0 P.S.I.

MAX. TEMP. 275 °F

SERIAL 120908

YEAR 1972

NAT'L. BD. 1958

UUM- 29.92 HG