

1996 M&M 58 / Howden WRV 204/1.1 Rotary Screw Compressor Package – 250 HP

Mfg: M&M / Howden

Model: 58 / WRV 204/1.1

Stock No: ATGP201

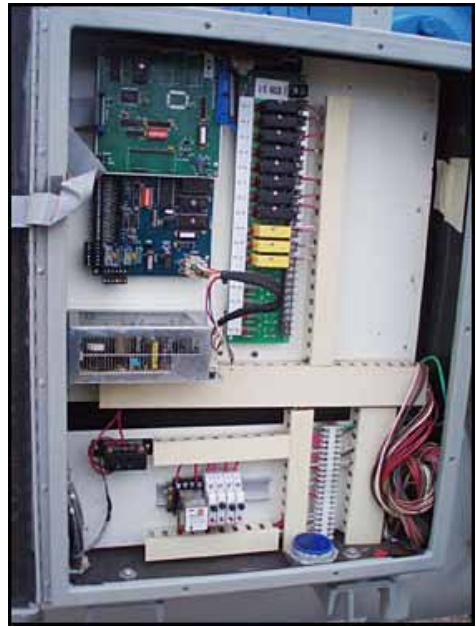
Serial No: MK5D-1126

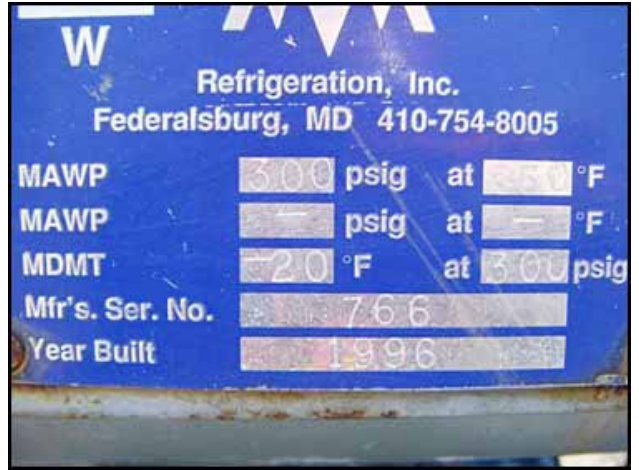
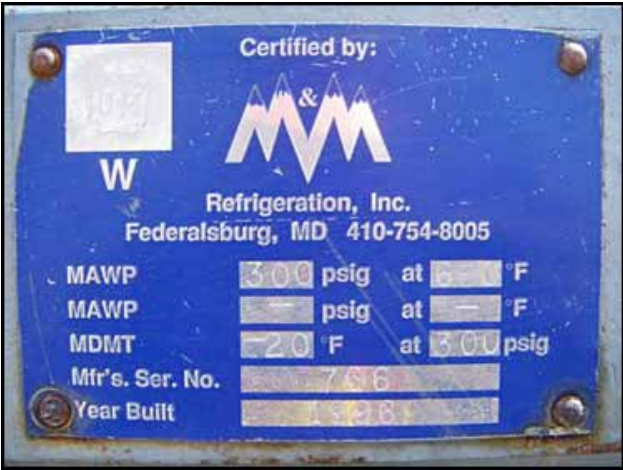
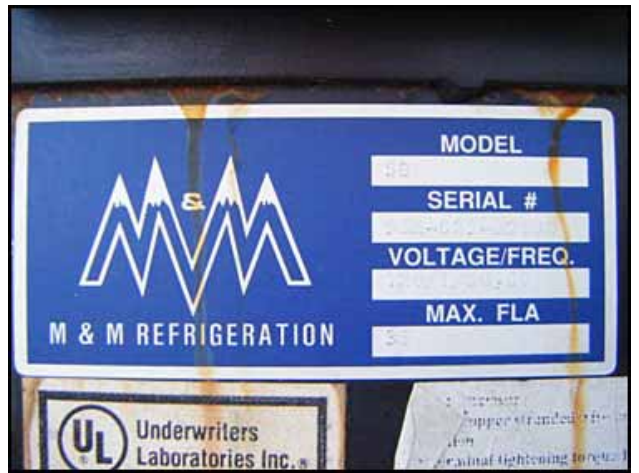
1996 M&M 58 / Howden WRV 204/1.1 Rotary Screw Compressor Package. Model: 58 / WRV 204/1.1. S/N: 96M-029-0200A / MK5D-1126. Refrigerant: Last used with R-717 (ammonia). Nominal design capacity: 232 tons at 220 bhp with 25°F suction temperature and a 90°F discharge temperature. Vi setting: 2.6. Displacement: 568 cfm. Leak test pressure: 313 psig. Hydrostatic test pressure: 470 psig. 1996 M&M oil separator, S/N: 96A044, Nat'l Bd: 781, MAWP: 300 psig @ 650°F, MDMT: -20°F @ 300 psig. Siemens electric motor, 250 hp, 3570 rpm, 460 V, 264 amps, 60 Hz, 3 phase. M&M control panel, power supply: 120 V, 36 FLA, 50/60 Hz, single phase. 1996 M&M Filter, S/N: 766, MAWP: 300 psi @ 650°F, MDMT: -20°F @ 300 psig. Viking rotary positive displacement pump, Model: AK495, S/N: 11563269. U.S. Electric motor, 5 hp, 1165 rpm, 208-230/460 V, 17.4-16/8 amps, 60 Hz, 3 phase. (2) Hansen Technologies pressure relief valves. Inlets: (1) 5 in. dia. compressor suction port. Outlets: (1) 3/4 in. dia. pressure relief port, (1) 4 in. dia. compressor discharge port. Approximate weight: 8,000 lbs. Overall dimensions: 12 ft. 3 in. L x 6 ft. W x 9 ft. 9 in. (ACN672a)











W
Refrigeration, Inc.
 Federalsburg, MD 410-754-8005

MAWP _____ psig at _____ F
 MAWP _____ psig at _____ F
 MDMT _____ F at _____ psig

Mfr's Ser. No. _____
 Year Built _____

Federalsburg, MD 410-754-8005

300 psig at _____ F
 _____ psig at _____ F
 _____ F at _____ psig

er. No. _____
 Yr. Built _____

OVER
 EQUIPMENT CO.
 OAKLAND, CA
 (510) 444-3731

VIKING SERIAL
 DD-126851

AK495

OVER
 EQUIPMENT CO.
 OAKLAND, CA
 (510) 444-3731

VIKING SERIAL
 DD-126851

AK495

VIKING PUMP, INC., A Unit of IDEX Corporation
 CEDAR FALLS, IA, USA

SER# 11563269
 MOD AK495

VIKING PUMP, INC., A Unit of IDEX Corporation
 CEDAR FALLS, IA, USA

SER# 11563269
 MOD AK495

UNIMOUNT® 125 ENCLOSED HIGH EFFICIENCY MOTOR

MODEL A966A HP 5.0 PH 3 Ø2.60 RPM 1165 DES B
 FRAME 215TC TYPE UT ENCL TE SF 1.25 CODE H NEMA 35.5
 VOLTS 208-230/460 ID YQ5Y037R274M
 FL AMPS 17.4-16.0/8.0 SHAFT 6208-2Z Wdg 40°C
 I.F. AMPS 19.0/9.5 END BRG 6206-2Z DUTY:CONT

USABLE ON 208V 60HZ ALTERNATE RATINGS N/A AMP MAX AT 1800REV MIN
 AT N/A AMP MAX

U.S. ELECTRICAL MOTORS
 DIVISION OF EMERSON ELECTRIC CO.
 ST. LOUIS, MO 63101-732
 MADE IN MEXICO

PREMIUM EFFICIENCY

WIRE 21 PLUS

MODEL	A966A	DES	B
TYPE	215TC	FRAME	215TC
H.P.	5.0	PHASE	3
AMP	17.4	VOLTS	208-230
R.P.M.	1165	HERTZ	60
DUTY	CONT	Wdg	40°C
SHAFT	6208-2Z	Wdg	40°C
END BRG	6206-2Z	Wdg	40°C
Wdg	40°C	Wdg	40°C
DUTY	CONT	DUTY	CONT

MIL AND CHEMICAL DUTY QUALITY INDUCTION MOTOR

