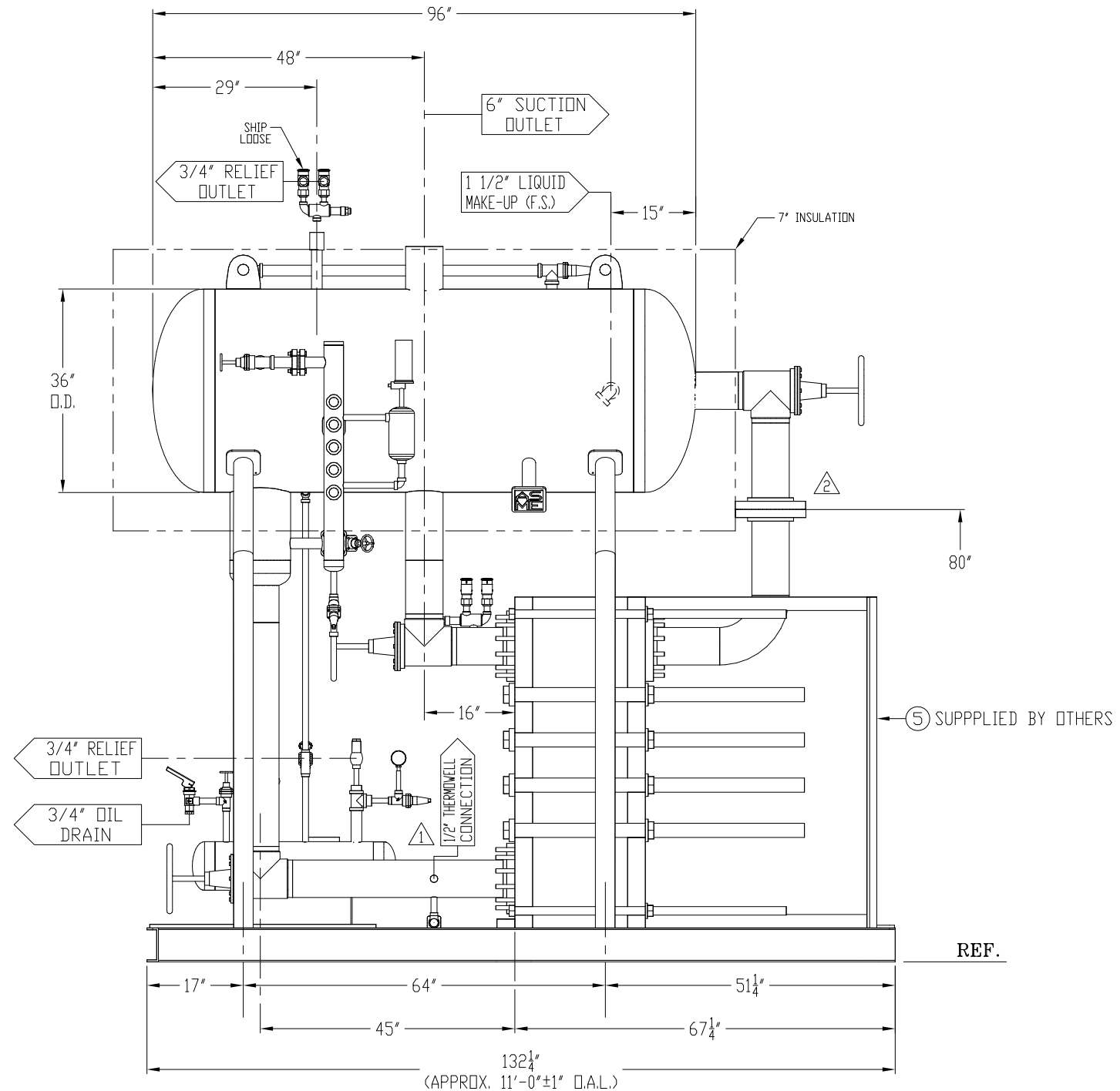


LEFT ELEVATION VIEW



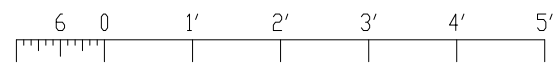
FRONT ELEVATION VIEW

CERTIFIED

GENERAL NOTES:

- 1.) ALLOW 7" INSULATION CLEARANCE ON VESSEL.
- 2.) ALLOW 3" INSULATION CLEARANCE ON PIPING.
- 3.) LEVEL & GROUT ON SITE BY OTHERS.

HEAT EXCHANGER THERMAL DATA								
SIDE	MEDIA	INLET	INLET TEMP	OUTLET	OUTLET TEMP	FLOW RATE	PRESSURE DROP	LIQUID VOLUME
1	10.0% SUGAR	S2	95.0°F	S1	36.0°F	62000 lb/h	0.2591 psi	3.08 cu. ft.
2	AMMONIA	S3	32.0°F	S4	32.0°F	8531 lb/h	0.6086 psi	3.16 cu. ft.



RVS PROJECT No. 80004

SERVER\DWG ARCHIVE\50000\50700-50799

CONFIDENTIAL
THIS DOCUMENT CONTAINS PROPRIETARY ENGINEERING DESIGNS WHICH ARE THE PROPERTY OF REFRIGERATION VALVES & SYSTEMS CORPORATION. IT SHOULD NOT BE DISCLOSED OR USED TO REPLICATE THE PRODUCT WITHOUT PRIOR WRITTEN AUTHORIZATION.

SHIPPING DIMS: 6'-6" W x 10'-9" H x 11'-0" L x 7,485 Lbs DRY

CUSTOMER **ECLIPSE INNOVATIVE, INC.** P.O. 15-1316

REVISIONS				
Rev.	DATE	BY	DESCRIPTION	APR'D
0	10-14-15	EL	SENT FOR APPROVAL	
1	12-12-15	EL	ADDED 1/2" CPLG, RELEASED FOR FABRICATION	DS
2	02-05-16	EL	ADDED FLANGE SET	SB

REFRIGERATION VALVES and SYSTEMS CORPORATION
A WHOLLY OWNED SUBSIDIARY OF EVAPCO INC.



PACKAGED VESSEL SYSTEMS and CONTROLS
1520 CROSSWIND DRIVE, BRYAN, TX. 77808

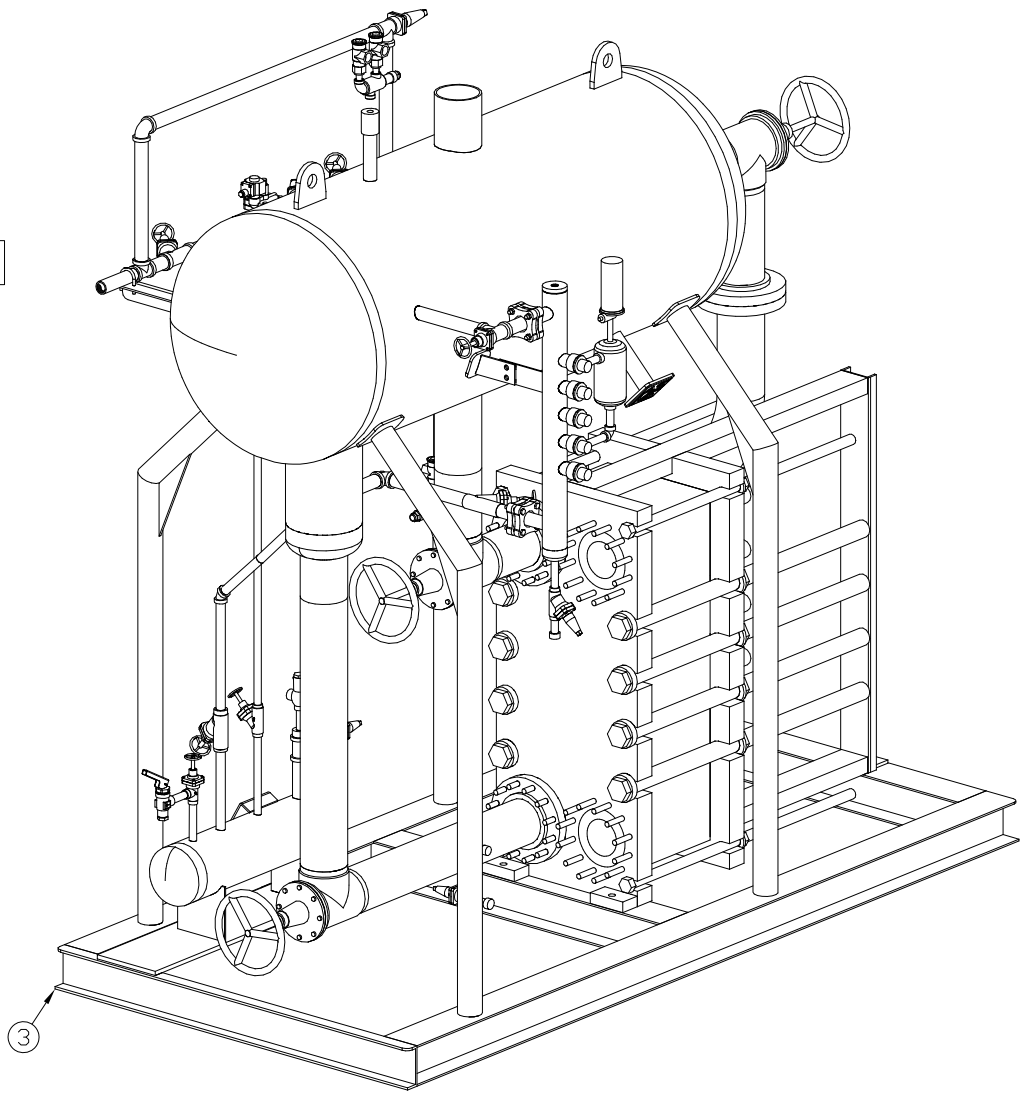
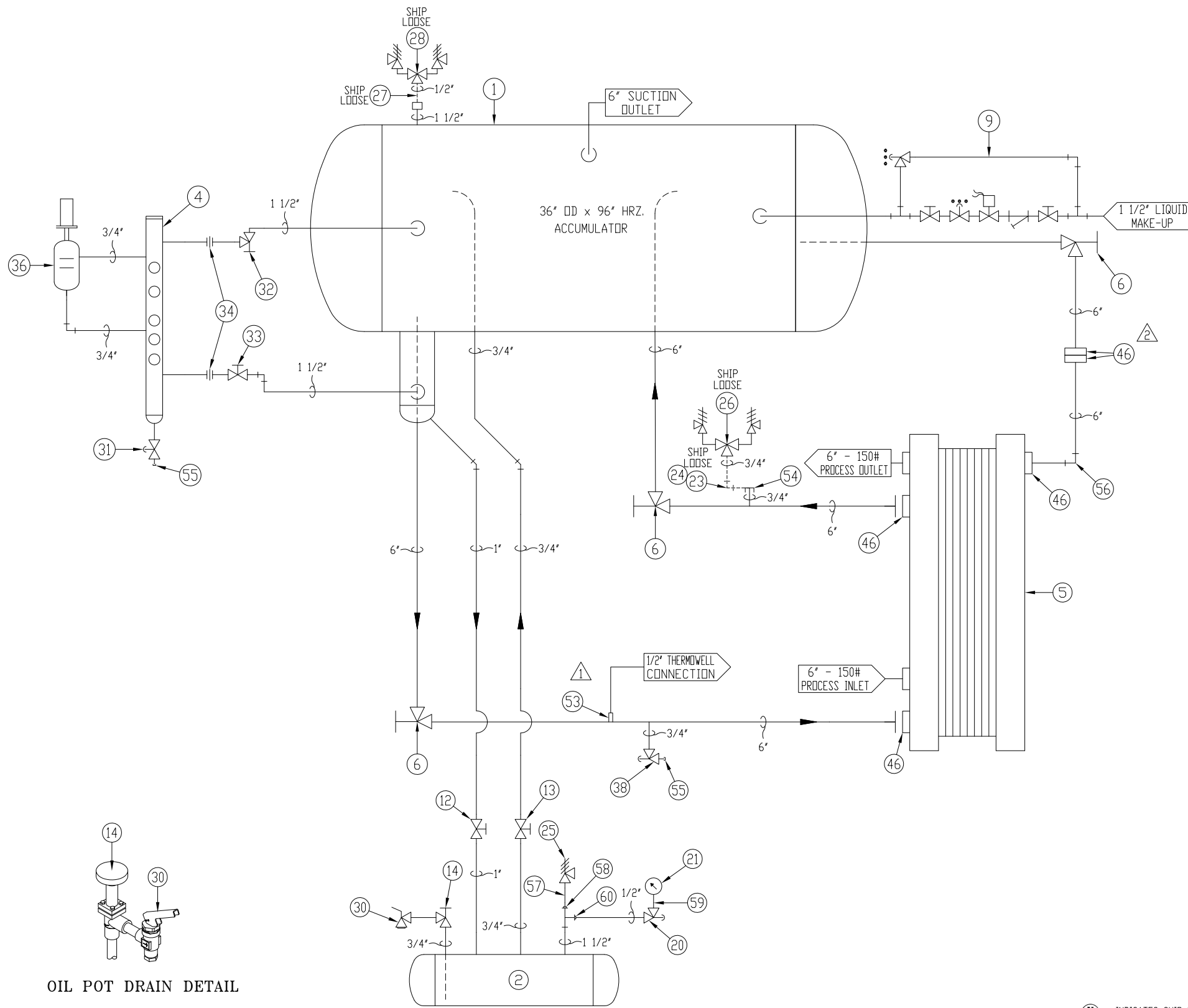
DESIGN PRESSURE 250 PSIG @ 300 °F DUAL STAMP FOR 85 PSIG @ -50 °F PNEUMATIC TEST @ 275 PSIG	ELECTRICAL - R.V.S. TO SUPPLY A NEMA ELECTRICAL CONTROL PANEL ND - R.V.S. TO SUPPLY MOTOR STARTER DISCONNECTS - Hp ND - R.V.S. TO FACTORY WIRE ND
SPECIFICATIONS REFRIGERANT: R-717 MAX VESSEL CAPACITY 288 TR @ 32 °F MAX SURGE VOLUME AVAILABLE: 11.8 CF PUMP CAPACITY: N/A GPM @ N/A PSID N.P.S.H. REQ'D: N/A HP: N/A	MATERIAL PIPE: SA106B B.W. FITTINGS: SA234-WPB S.W. FITTINGS, CPLG'S & FLNG'S: SA105 BOLTS: SA193-B7 NUTS: SA194-2H
FINISH SANDBLASTED SSPC-SP6 & RVS HYPER BLUE PRIMER, DRAINED & NITROGEN CHARGED.	

LINE VOLTAGE: - / - / -	CONTROL VOLTAGE: 120 / 1 / 60
--------------------------------	--------------------------------------

TITLE
36" O.D. x 96" 250# ASME MPC-36 CHILLER ASSEMBLY w/ (1) MK15BW-FD PLATE HEAT EXCHANGER

DRAWN BY: EL 09-24-15
CHECKED BY: DS 12-11-15
SCALE: N.T.S.
S/N: 50776
Thru 50777

DWG No. Sheet 1 of 2
50776A
REV. 2



CERTIFIED

OIL POT DRAIN DETAIL

BILL OF MATERIALS

ITEM	QTY	DESCRIPTION	PART No.	MPTR	ITEM	QTY	DESCRIPTION	PART No.	MPTR	ITEM	QTY	DESCRIPTION	PART No.	MPTR	ITEM	QTY	DESCRIPTION	PART No.	MPTR	
60	1	1 1/2" x 1/2" S.W. REDUCING INSERT, 3000#, SA105			45					30	1	3/4" FPT QUICK CLOSING OIL DRAIN VALVE, TYP ODV IS	148H3274	DANFOSS	15					
59	1	1/4" LONG CPLG., 3000#, SA350-LF2 CL.1 @ 4"			44					29					14	1	3/4" S.W. EXT. NECK ANGLE VALVE w/ HANDWHEEL	148B5362	DANFOSS	
58	1	1 1/2" S.W. x 1/2" THD. REDUCING INSERT, 3000#, SA105			43					28	1	1/2" x 3/4" DUAL RELIEF VALVE SET @ 250 PSI	H5600RD	HANSEN	13	1	3/4" S.W. EXT. NECK GLOBE VALVE w/ HANDWHEEL	148B5372	DANFOSS	
57	1	1 1/2" x 2" THD. NIPPLE, S/80, SA106B			42					27	1	1/2" THD. NIPPLE, S/80, SA106B @ 4" LONG (NOT SHOWN)			12	1	1" S.W. EXT. NECK GLOBE VALVE w/ HANDWHEEL	148B5472	DANFOSS	
56	1	6" B.W. 90° ELBOW, S/40, L.R.			41					26	1	3/4" x 1" DUAL RELIEF VALVE ASS'Y SET @ 250 PSI	H5632RD	HANSEN	11					
55	2	3/4" THREADED PIPE CAP w/ 3/4" S/80 PIPE (T.D.E.) @ 3' LONG			40					25	1*	1/2" x 3/4" SINGLE RELIEF VALVE SET @ 300 PSI	H5600R	HANSEN	10					
54	1	3/4" THREADED PIPE CAP w/ 3/4" S/80 PIPE (T.D.E.) @ 6' LONG			39					24	1	3/4" THD. 90° ELBOW, 3000#, SA105 (NOT SHOWN)			9	1	1 1/2" LIQUID FEED ASSEMBLY (MODEL 6LF150)	50776C	R.V.S.	
53	1	1 1/2" THD. CPLG., 3000#, SA105			38	1	3/4" S.W. EXT. NECK ANGLE VALVE w/ SEALCAP	148B5363	DANFOSS	23	1	3/4" THD. NIPPLE, S/80, SA106B @ 4" LONG (NOT SHOWN)			8					
52					37					22					7					
51					36	1	FLOAT SWITCH	H.L.L.	HANSEN	21	1	2 1/2" @ 0-300# PRESSURE GAUGE (GLYCERIN FILLED)	401FW-240H	E.S.P.	6	3	6" B.W. ANGLE VALVE w/ HANDWHEEL (88 #ea.)	148B6220	DANFOSS	
50					35					20	1	1/2" S.W. EXT. NECK ANGLE VALVE w/ SEALCAP	148B5263	DANFOSS	5	1*	PLATE HEAT EXCHANGER S/N 30116-94190 (3,900 #)	MK15-BWFD	ALFA LAVAL	
49					34	2	1 1/2" S.W. FLANGED UNION	S25V-2d 1/2	HENRY	19					4	1	#5 LEVEL COLUMN w/ H1100-RN (115 #)	50776B	R.V.S.	
48					33	1	1 1/2" S.W. EXT. NECK GLOBE VALVE w/ HANDWHEEL	148B5672	DANFOSS	18					3	1	STRUCTURAL STEEL SUPPORT (905 #)	50776S	R.V.S.	
47					32	1	1 1/2" S.W. EXT. NECK ANGLE VALVE w/ HANDWHEEL	148B5662	DANFOSS	17					2	1	8 5/8" D.D. x 36" 300# ASME HRZ. OIL PDT (141 #)	50777	R.V.S.	
46	5*	6" RFSD FLANGE, 300# w/ FULL FACE GASKET & 3/4" NUTS	SA105	R.V.S.	31	1	3/4" S.W. EXT. NECK GLOBE VALVE w/ SEALCAP	148B5373	DANFOSS	16					1	1	36" D.D. x 96" 250# ASME HRZ. SURGE DRUM (1,685 #)	50776	R.V.S.	

RVS PROJECT No. 80004 SERVER\DWG ARCHIVE\50000\50700-50799

THIS DOCUMENT CONTAINS PROPRIETARY ENGINEERING DESIGNS WHICH ARE THE PROPERTY OF REFRIGERATION VALVES & SYSTEMS CORPORATION. IT SHOULD NOT BE DISCLOSED OR USED TO REPLICATE THE PRODUCT WITHOUT PRIOR WRITTEN AUTHORIZATION.

CUSTOMER **ECLIPSE INNOVATIVE, INC.** P.O. 15-1316

REVISIONS				
Rev.	DATE	BY	DESCRIPTION	APR'D
0	10-14-15	EL	SENT FOR APPROVAL	DS
1	12-12-15	EL	ADDED 1/2" CPLG., RELEASED FOR FABRICATION	DS
2	02-05-16	EL	ADDED FLANGE SET	SB

TITLE **PIPING & INSTRUMENTATION DIAGRAM FOR MPC-36 CHILLER ASSEMBLY w/ (1) MK15BW-FD PLATE HEAT EXCHANGER**

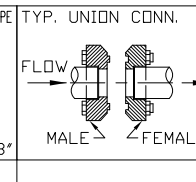
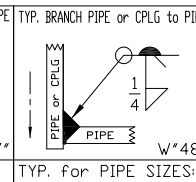
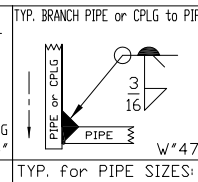
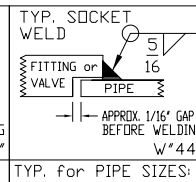
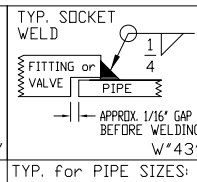
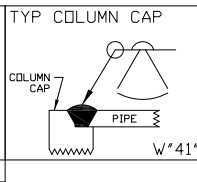
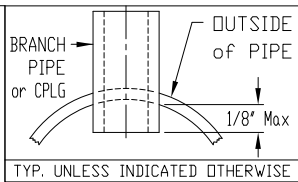
DRAWN BY: EL 09-24-15 CHK'D BY: DS 12-11-15 S/N: 50776
 APR'D BY: DS 12-11-15 SCALE: N.T.S. Thru 50777



REFRIGERATION VALVES and SYSTEMS CORPORATION
 A WHOLLY OWNED SUBSIDIARY OF EVAPCO INC.
 1520 CROSSWIND DRIVE, BRYAN, TX. 77808

DWG No. 50776A Sheet 2 of 2 REV. 2

- GENERAL NOTES**
- 1) WELDING SHALL BE IN ACCORDANCE WITH WPS-1-1 (CARBON STL TO CARBON STL) WPS-1-8 (CARBON STL TO STAINLESS STL) WPS-8-8 (STAINLESS STL TO STAINLESS STL)
 - 2) FABRICATION TOLERANCES PER R.V.S. SHOP PROCEDURE No. T-701.
 - 3) ALL WELDS SHALL MEET VISUAL ACCEPTANCE CRITERIA OF GAP-704.
 - 4) COATING SHALL BE IN ACCORDANCE WITH MAP-606.
 - 5) BOLT TORQUES SHALL BE IN ACCORDANCE WITH MAP-608.
 - 6) SA53B SMLS PIPE MAY BE SUBSTITUTED FOR SA106B SEAMLESS PIPE.
 - 7) SA516-70 PLATE MAY BE SUBSTITUTED FOR SA36 PLATE.
 - 8) ALL BOLT HOLES STRADDLE CENTERLINES.
 - 9) ALL GLOBE VALVE STEMS TO BE HORIZONTAL.
 - 10) AIR TEST at 275 PSI.



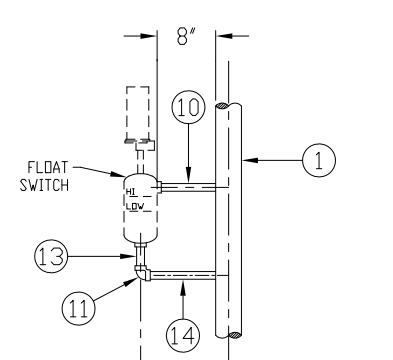
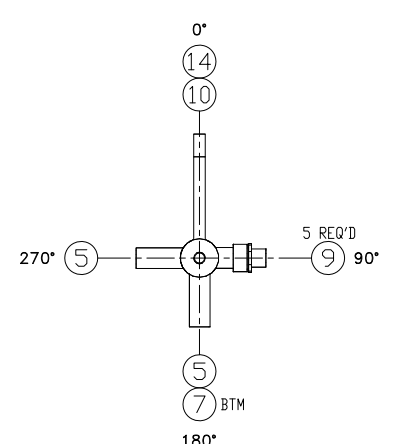
TYP. for PIPE SIZES: S/80 1/2" & 3/4"

TYP. for PIPE SIZES: S/40 2 1/2" & 3"

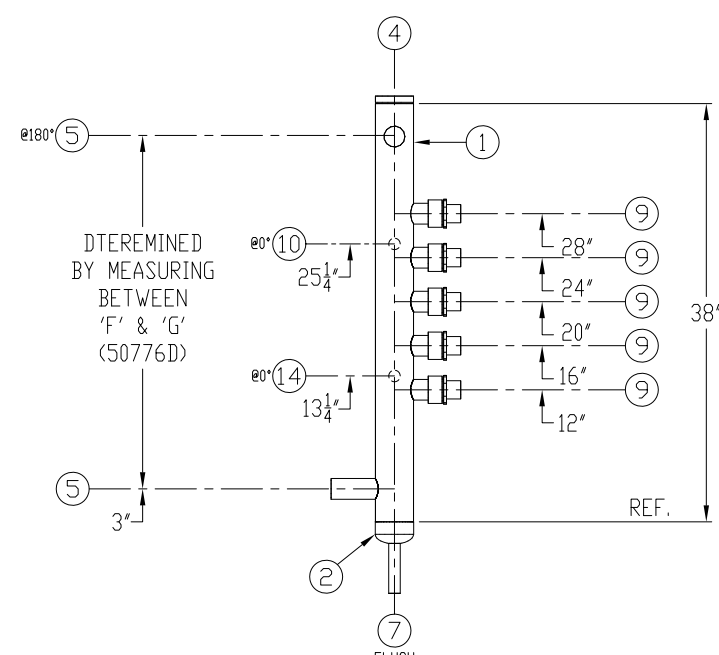
TYP. for PIPE SIZES: S/80 3/8", 1/2", 3/4" & 1" CPLG 3/8", 1/4"

TYP. for PIPE SIZES: S/80 1 1/4", 1 1/2" & 2" S/40 2 1/2", 3" & 4" CPLG 1/2" & 3/4"

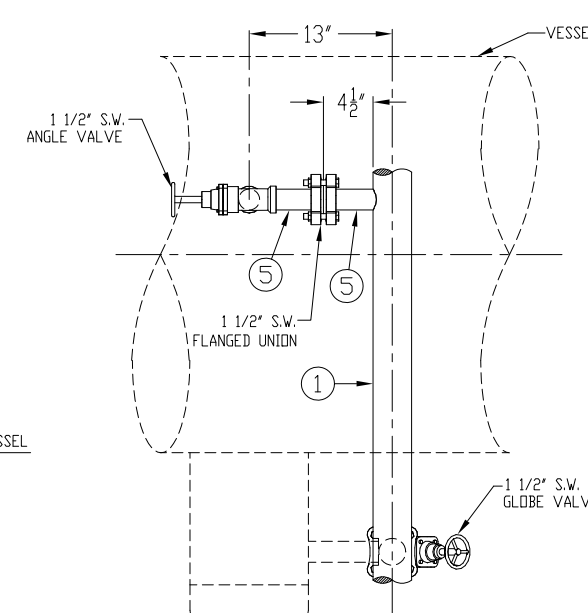
LEVEL INDICATOR



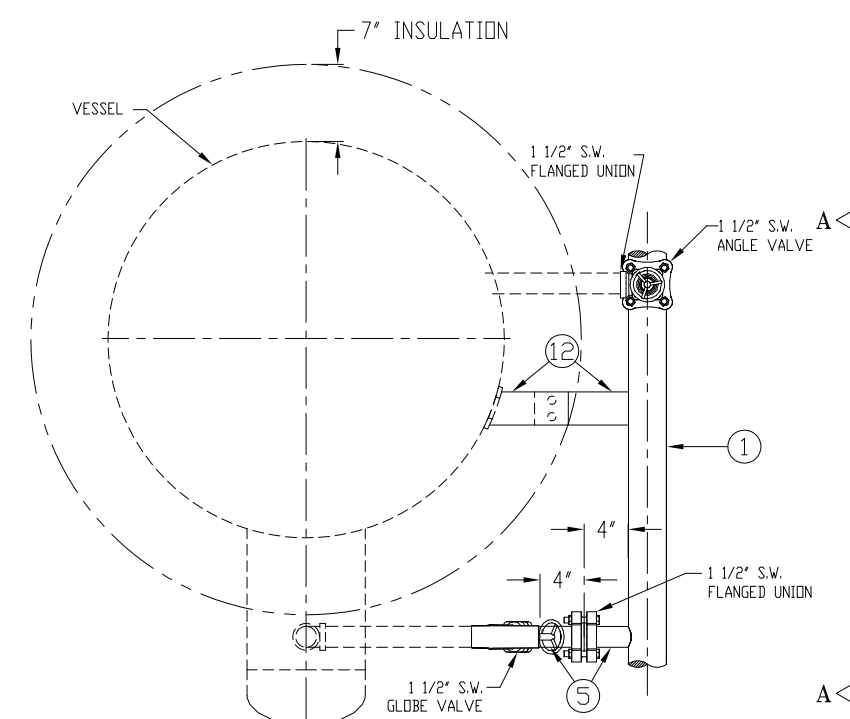
FLOAT SWITCH PIPING DETAIL
N.T.S.



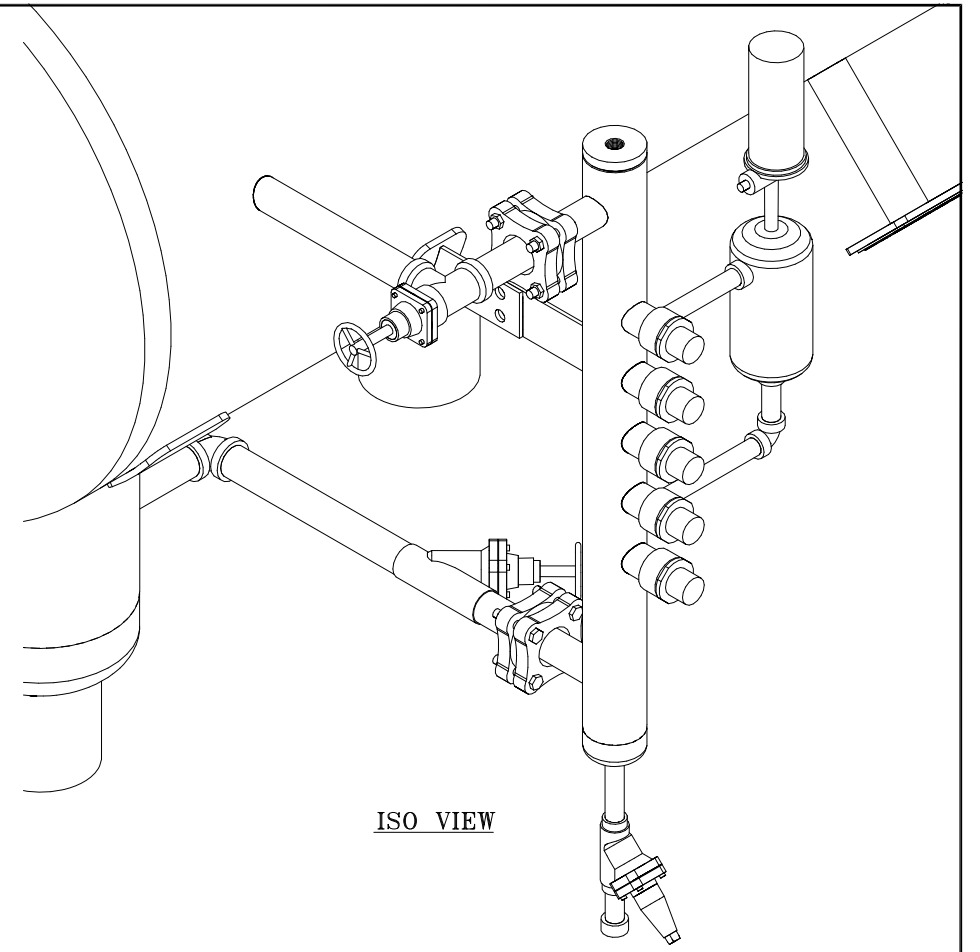
#5 LEVEL COLUMN
AIR TEST @ 275# PSI
(MOUNTED - 115 #)



VIEW 'A-A'



LEVEL COLUMN NOZZLE DETAIL



ISO VIEW

CERTIFIED

RVS PROJECT No. 80004
ESTIMATED SHIPPING WEIGHT 115 LBS
SERVER\DWG ARCHIVE\50000\50700-50799

(X) - INDICATES FROST SHIELD SHIP LOOSE

BILL of MATERIALS						
ITEM	QTY	SIZE	TYPE	RATING	MATERIAL	LENGTH
17						
16						
15						
14	1	3/4"	PIPE	S/80	SA106B	10"
13	1	3/4"	PIPE (T.D.E.)	S/80	SA106B	3 1/2"
12	2	3"	FLAT BAR	1/4"	SA36	8 1/2"
11	1	3/4"	S.W. 90° ELBOW	3000#	SA105	
10	1	3/4"	PIPE (T.D.E.)	S/80	SA106B	8 1/4"
(9)	5	H1100-RN	HANSEN LEVEL INDICATOR w/ FROST SHIELD		SA36	
8						
7	1	3/4"	PIPE	S/80	SA106B	7 1/2"
6						
5	4	1 1/2"	PIPE	S/80	SA106B	5"
4	1	3 1/2"Ø	HANSEN PROBE COLUMN CAP	3/4" THK.	P/N 77-0129	
3	1	3"	BACKING RING		SA414	
2	1	3"	B.W. PIPE CAP	S/40	SA234-WPB	
1	1	3"	PIPE (24 #)	S/40	SA106B	38"
ITEM	QTY	SIZE	TYPE	RATING	MATERIAL	LENGTH

REVISIONS				
Rev.	DATE	BY	DESCRIPTION	APR'D
0	12-12-15	EL	RELEASED FOR FABRICATION	DS

CUSTOMER **ECLIPSE INNOVATIVE, INC.** P.O. 15-1316

TITLE **#5 LEVEL COLUMN FOR 36" O.D. HRZ. SURGE DRUM**

DRAWN BY: EL 11-05-15 SCALE: 1 1/2"=1'-0"

CHK'D BY: DS 12-11-15 S/N: 50776

DWG No. **50776B** REV. **0**

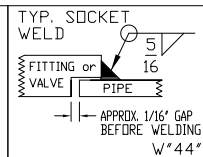
REFRIGERATION VALVES and SYSTEMS CORPORATION
A WHOLLY OWNED SUBSIDIARY OF EVAPCO INC.

RVS

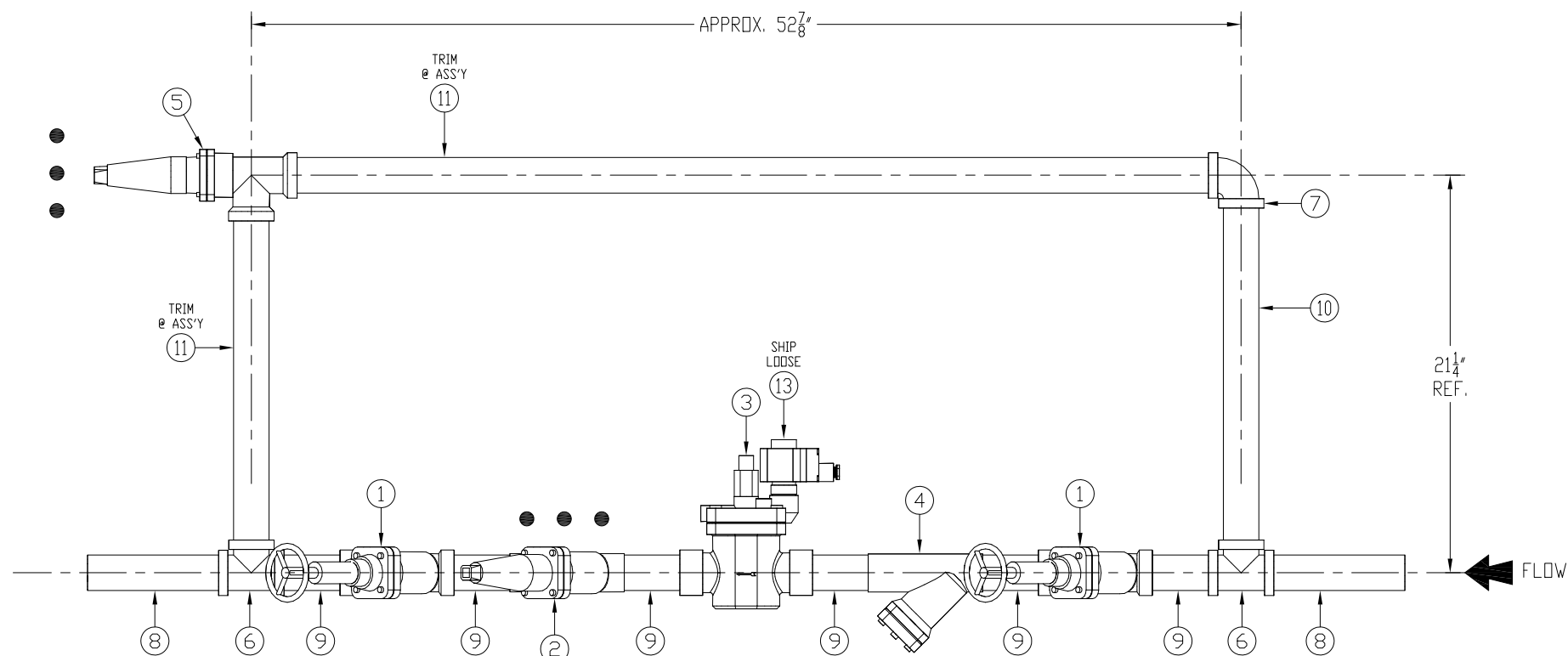
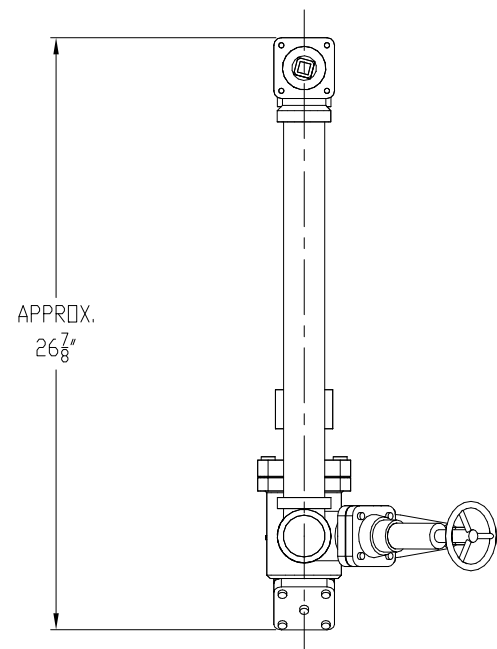
PACKAGED VESSEL SYSTEMS and CONTROLS
1520 CROSSWIND DRIVE, BRYAN, TX. 77808

GENERAL NOTES

- 1) WELDING SHALL BE IN ACCORDANCE WITH: WPS-1-1 (CARBON STL TO CARBON STL) WPS-1-8 (CARBON STL TO STAINLESS STL) WPS-8-8 (STAINLESS STL TO STAINLESS STL)
- 2) FABRICATION TOLERANCES PER R.V.S. SHOP PROCEDURE No. T-701.
- 3) ALL WELDS SHALL MEET VISUAL ACCEPTANCE CRITERIA OF QAP-704.
- 4) COATING SHALL BE IN ACCORDANCE WITH MAP-606.
- 5) BOLT TORQUES SHALL BE IN ACCORDANCE WITH MAP-608.
- 6) SA53B SMLS PIPE MAY BE SUBSTITUTED FOR SA106B SEAMLESS PIPE.
- 7) SA516-70 PLATE MAY BE SUBSTITUTED FOR SA36 PLATE.
- 8) ALL BOLT HOLES STRADDLE CENTERLINES.
- 9) ALL GLOBE VALVE STEMS TO BE HORIZONTAL.
- 10) AIR TEST at 275 PSI.



TYP. FOR PIPE SIZES:
 S/40 2 1/2" & 3"
 S/80 1", 1 1/4", 1 1/2" & 2"



CERTIFIED

RVS PROJECT No. 80004

ESTIMATED SHIPPING WEIGHT 100 LBS

CONFIDENTIAL
 THIS DOCUMENT CONTAINS PROPRIETARY ENGINEERING DESIGNS WHICH ARE THE PROPERTY OF REFRIGERATION VALVES & SYSTEMS CORPORATION.
 IT SHALL NOT BE REPRODUCED OR USED TO REPLICATE THE PRODUCT WITHOUT PRIOR WRITTEN AUTHORIZATION.

(X) - INDICATES SHIP LOOSE ITEMS * - INDICATES NON-STOCK ITEMS

SERVER\DWG ARCHIVE\50000\50700-50799

BILL of MATERIALS						
ITEM	QTY	SIZE	TYPE	RATING	MATERIAL	LENGTH
17						
16						
15						
14						
(13)	1*	24V DC	SOLENOID COIL w/ TERMINAL BOX, 20W HOLDING FOR ITEM 3	DANFOSS	018F6857	
12						
11	1	1 1/2"	PIPE (TRIM @ ASS'Y)	S/80	SA106B	70"
10	1	1 1/2"	PIPE	S/80	SA106B	18 3/4"
9	6	1 1/2"	PIPE	S/80	SA106B	4"
8	2	1 1/2"	PIPE	S/80	SA106B	7 1/2"
7	1	1 1/2"	S.W. 90° ELBOW	3000H	SA105	
6	2	1 1/2"	S.W. TEE	3000H	SA105	
5	1	1 1/2"	S.W. EXPANSION ANGLE VALVE w/ SEALCAP	DANFOSS	148B5605	
4	1	1 1/2"	S.W. STRAINER (GLOBE BODY) (FIA-40)	DANFOSS	148X0133	
3	1	1 1/2" PORT	S.W. SOLENOID VALVE (ICS40)	DANFOSS	148X0226	
2	1	1 1/2"	S.W. EXPANSION GLOBE VALVE w/ SEALCAP	DANFOSS	148B5615	
1	2	1 1/2"	S.W. EXT. NECK GLOBE VALVE w/ HANDWHEEL	DANFOSS	148B5672	

CUSTOMER ECLIPSE INNOVATIVE, INC. P.O. 15-1316

REVISIONS				
Rev.	DATE	BY	DESCRIPTION	APR'D
0	10-14-15	EL	SENT FOR APPROVAL	
1	12-12-15	EL	ITEM 13 WAS 018F6816, RELEASED FOR FABRICATION	DS

REFRIGERATION VALVES and SYSTEMS CORPORATION
 A WHOLLY OWNED SUBSIDIARY OF EYAFPCO INC.



TITLE
 1 1/2" LIQUID FEED ASSEMBLY MODEL 6LF150
 w/ HAND EXPANSION VALVE

DRAWN BY: EL 09-25-15
 CHECKED BY: DS 12-11-15
 S/N: 50776

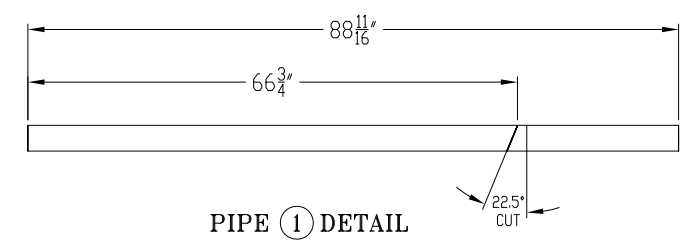
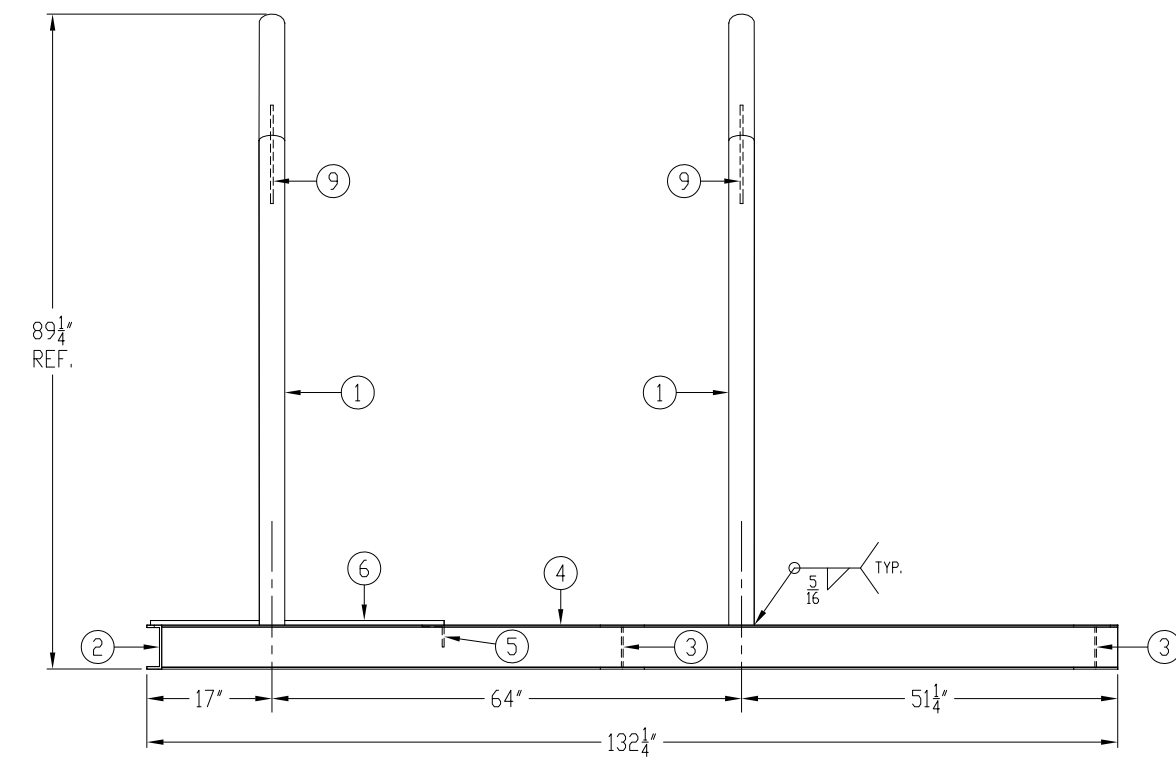
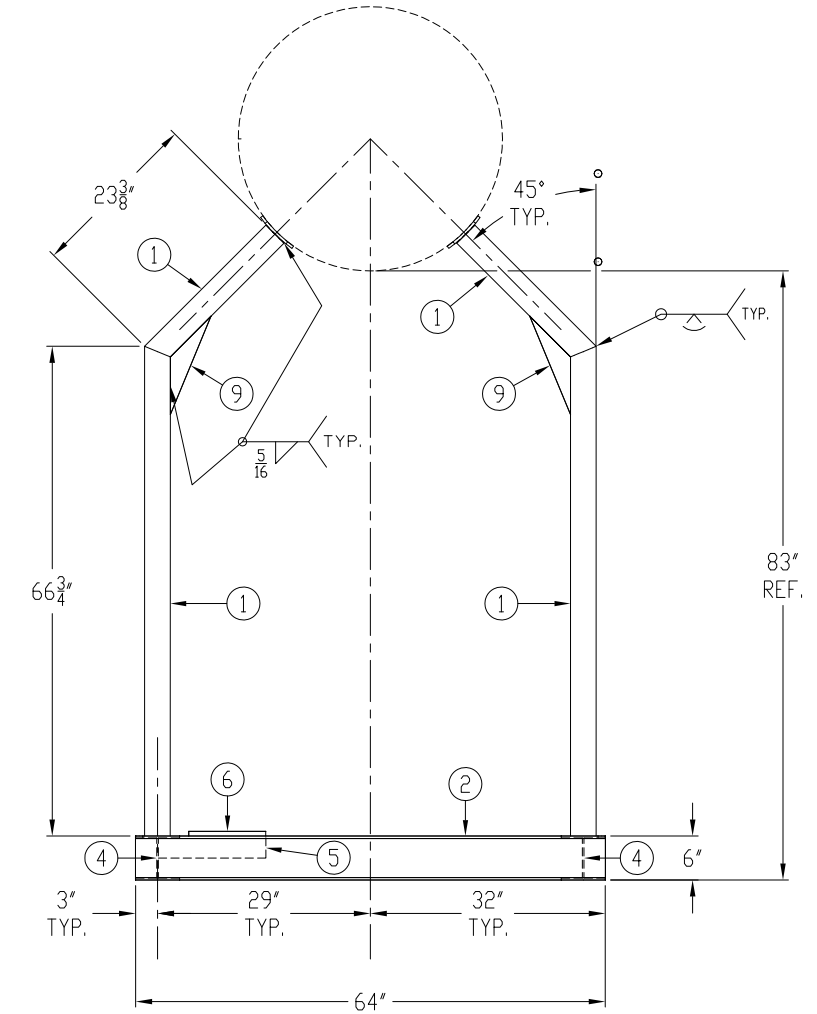
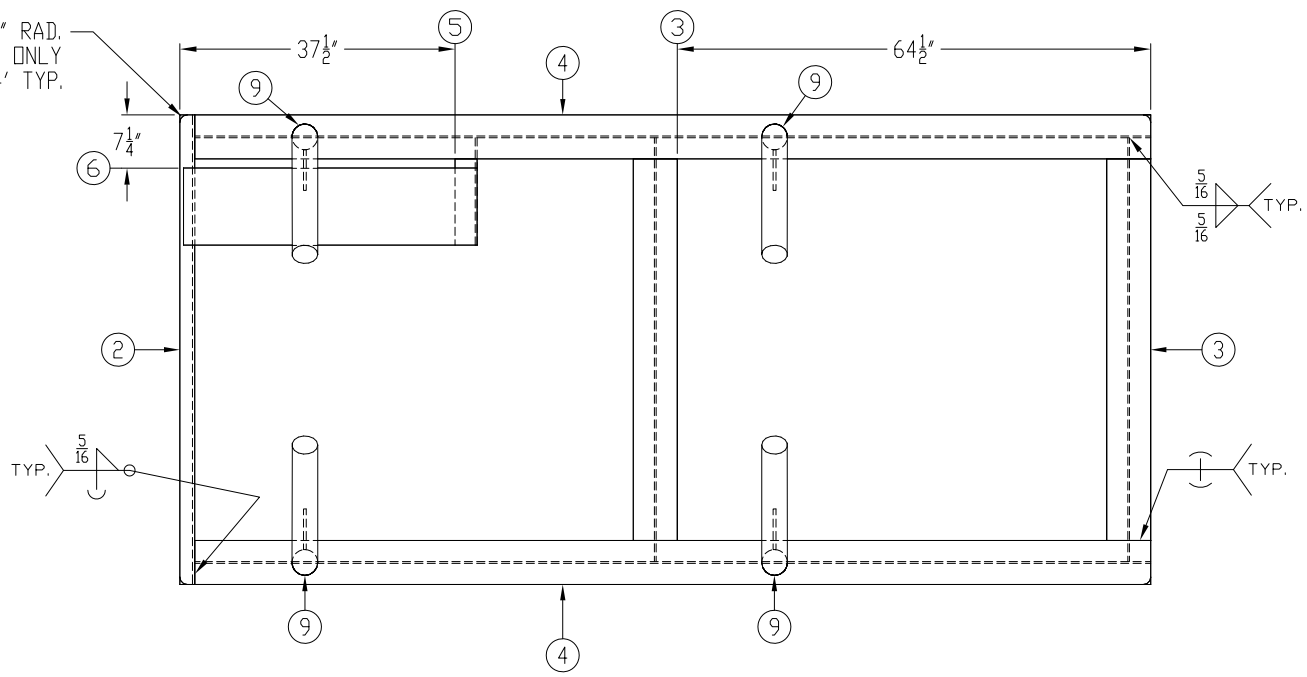
PACKAGED VESSEL SYSTEMS and CONTROLS
 1520 CROSSWIND DRIVE, BRYAN, TX. 77808

DWG No. 50776C
 REV. 1

GENERAL NOTES

- 1) WELDING SHALL BE IN ACCORDANCE WITH: WPS-1-1 (CARBON STL TO CARBON STL) WPS-1-8 (CARBON STL TO STAINLESS STL) WPS-8-8 (STAINLESS STL TO STAINLESS STL)
- 2) FABRICATION TOLERANCES PER R.V.S. SHOP PROCEDURE No. T-701.
- 3) ALL WELDS SHALL MEET VISUAL ACCEPTANCE CRITERIA OF QAP-704.
- 4) COATING SHALL BE IN ACCORDANCE WITH MAP-606.
- 5) BOLT TORQUES SHALL BE IN ACCORDANCE WITH MAP-608.
- 6) SA53B SMLS PIPE MAY BE SUBSTITUTED FOR SA106B SEAMLESS PIPE.
- 7) SA516-70 PLATE MAY BE SUBSTITUTED FOR SA36 PLATE.
- 8) ALL BOLT HOLES STRADDLE CENTERLINES.

1' RAD.
TOP FLANGE ONLY
ITEM '2' & '4' TYP.



CERTIFIED

RVS PROJECT No. 80004

ESTIMATED SHIPPING WEIGHT 905 LBS

CONFIDENTIAL
THIS DOCUMENT CONTAINS PROPRIETARY ENGINEERING DESIGNS WHICH ARE THE PROPERTY OF REFRIGERATION VALVES & SYSTEMS CORPORATION.
IT SHALL NOT BE REPRODUCED OR USED TO REPLICATE THE PRODUCT WITHOUT PRIOR WRITTEN AUTHORIZATION.

SERVER\DWG ARCHIVE\50000\50700-50799

CUSTOMER ECLIPSE INNOVATIVE, INC. P.O. 15-1316

BILL of MATERIALS						
ITEM	QTY	SIZE	TYP	RATING	MATERIAL	LENGTH
17						
16						
15						
14						
13						
12						
11						
10						
9	4	14 1/2" x 3"	PLATE (HLR-GUS) (5 #ea.)	3/8"	SA36	
8						
7						
6	1	10 1/2" x 40"	PLATE (74 #)	5/8"	SA36	
5	1	3" x 3"	ANGLE (6 #)	1/4"	SA36	14 3/4"
4	2	6"	W.F. BEAM (163 #ea.)	15#	A572 GR.50	130 1/4"
3	2	6"	W.F. BEAM (72 #ea.)	15#	A572 GR.50	57 3/4"
2	1	6"	CHANNEL (56 #)	10.5#	SA36	64"
1	4	3"	PIPE (SEE DETAIL) (56 #ea.)	S/40	SA106B	88 11/16"

REVISIONS				
Rev.	DATE	BY	DESCRIPTION	APR'D
0	12-12-15	EL	RELEASED FOR FABRICATION	DS

TITLE
STRUCTURAL STEEL SUPPORT FOR MPC-36 CHILLER ASSEMBLY

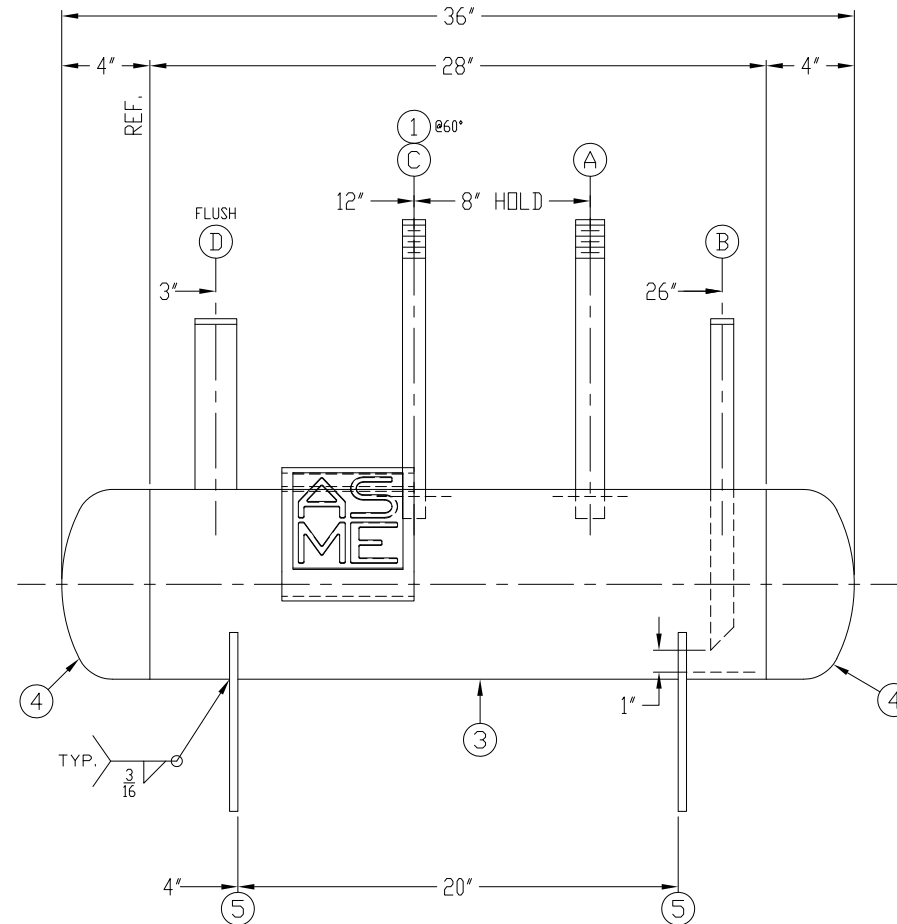
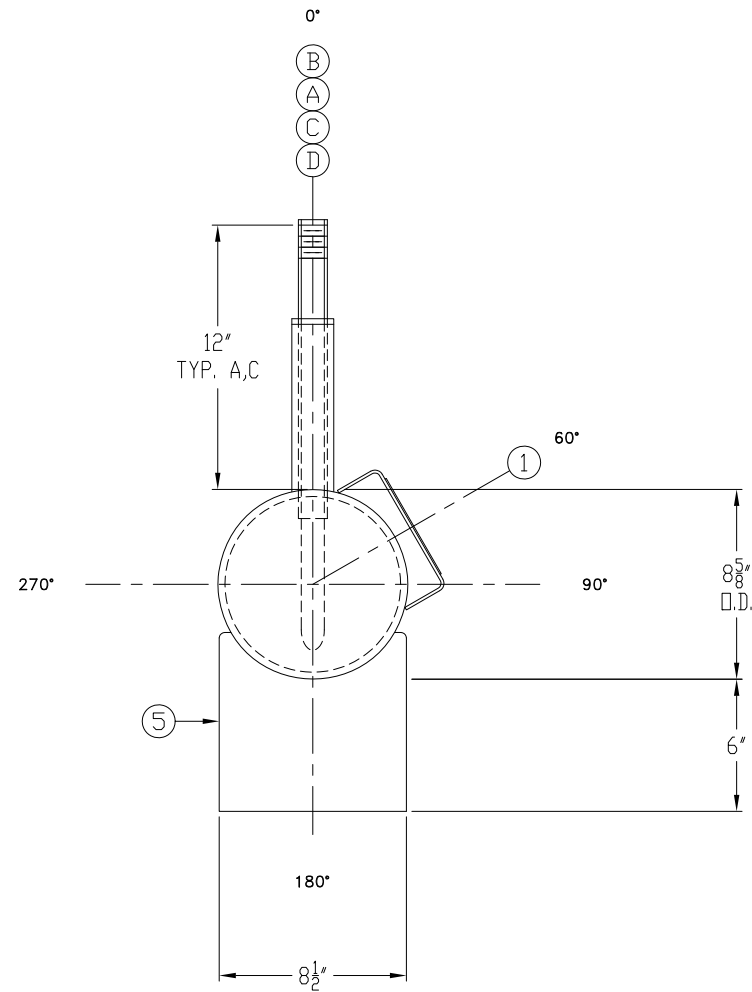
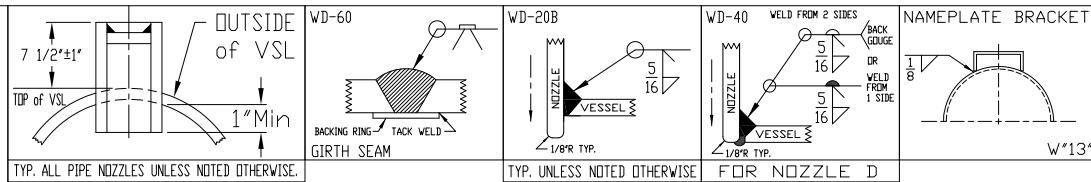
DRAWN BY: EL 11-19-15
CHECKED BY: DS 12-11-15
SCALE: 1" = 1'-0"
S/N: 50776

REFRIGERATION VALVES and SYSTEMS CORPORATION
A WHOLLY OWNED SUBSIDIARY OF EVAPCO INC.

PACKAGED VESSEL SYSTEMS and CONTROLS
1520 CROSSWIND DRIVE, BRYAN, TX. 77808

DWG No. 50776S
REV. 0

- GENERAL NOTES**
- 1) WELDING SHALL BE IN ACCORDANCE WITH WPS-1-1 (CARBON STL TO CARBON STL) WPS-1-8 (CARBON STL TO STAINLESS STL) WPS-8-8 (STAINLESS STL TO STAINLESS STL)
 - 2) FABRICATION TOLERANCES PER R.V.S. SHOP PROCEDURE No. T-701.
 - 3) ALL WELDS SHALL MEET VISUAL ACCEPTANCE CRITERIA OF QAP-704.
 - 4) PRESSURE TESTING SHALL BE IN ACCORDANCE WITH QAP-701 OR QAP-702 AS APPLICABLE.
 - 5) COATING SHALL BE IN ACCORDANCE WITH MAP-606.
 - 6) BOLT TORQUES SHALL BE IN ACCORDANCE WITH MAP-608.
 - 7) SA53B SMLS PIPE MAY BE SUBSTITUTED FOR SA106B SEAMLESS PIPE.
 - 8) SA516-70 PLATE MAY BE SUBSTITUTED FOR SA36 PLATE.
 - 9) ALL BOLT HOLES STRADDLE CENTERLINES.
 - 10) PADS & REPADS SHALL HAVE A 1/4"Ø WEEPHOLES UNLESS OTHERWISE INDICATED ON THE DRAWING.



CERTIFIED

RVS PROJECT No. 80004 SERVER:\DWG ARCHIVE\50000\50700-50799

0	12-12-15 EL	RELEASED FOR FABRICATION	DS 12-11-15
Rev.	DATE / BY	DESCRIPTION	CHK'D / DATE

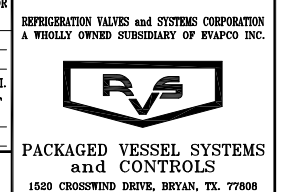
ESTIMATED WIDTH: 12" HEIGHT: 29"
 SHIPPING DIMENSIONS LENGTH: 36" DRY WEIGHT: 141 LBS

CUSTOMER ECLIPSE INNOVATIVE, INC. P.O. 15-1316

VESSEL DESIGN SPECIFICATIONS
 DESIGN & CONSTRUCTION IN ACCORDANCE WITH SECTION VIII DIV. 1 ASME CODE FOR PRESSURE VESSELS 2015 EDITION & ADDENDA TO ---
 SHELL: t=.088" CA: 0
 HEADS: t=.087" .2818" MIN. AFTER FORMING CA: 0
 M.A.W.P.: 300 P.S.I. HYDROSTATIC TEST: 390 P.S.I.
 RT: LONG: NONE / GIRTH: NONE HT: NONE
 PAINT: SANDBLAST SSPC-SP6, RVS HYPER BLUE PRIMER

TITLE 8 5/8" O.D. x 36" 300# ASME HRZ. MPC OIL POT

DRAWN BY: EL 09-25-15 SCALE: 3"=1'-0"
 CHK'D BY: DS 12-11-15 S/N: 50777



BILL of MATERIALS

NOZZLE SCHEDULE										SHELL, HEADS, INTERNALS, & SUPPORTS									
ITEM	QTY	SIZE	TYPE	RATING	MATERIAL	SERVICE	LENGTH	ITEM	QTY	SIZE	TYPE	RATING	MATERIAL	LENGTH					
R								16											
Q								15											
P								14											
N								13											
M								12											
L								11											
K								10											
J								9											
H								8											
G								7											
F								6											
E								5	2	8 1/8" x 8 1/2"	SADDLE P/N 1966	3/8"	SA36						
D	1	1 1/2"	PIPE	S/80	SA106B	RELIEF	9'	4	2	8"	B.W. PIPE CAP (12 #ea.)	S/40	SA234-WPB						
C	1	3/4"	PIPE (T.O.E.)	S/80	SA106B	VENT	13 1/2'	3	1	8"	PIPE SHELL (68 #)	S/40	SA106B	28'					
B	1	3/4"	PIPE	S/80	SA106B	OUTLET (M-1-45°)	14 3/4'	2	2	8"	BACKING RING	3/32"	SA414						
A	1	1"	PIPE (T.O.E.)	S/80	SA106B	INLET	13 1/2'	1	1	2" TALL	STD. NAMEPLATE BRACKET	3/16"	SA36	6'					

TEST WITH WATER

HYDRO NOTES:
 1) ESTIMATED VOLUME: 7.8 GALLONS.

CERTIFIED BY REFRIGERATION VALVES and SYSTEMS CORPORATION BRYAN, TEXAS

M.A.W.P. 300 PSI AT 300 °F
 M.A.W.P. XXX PSI AT XXX °F
 M.D.M.T. -50 °F AT 300 PSI

S/N 50777 YEAR 2016

SHELL THK HEAD THK U.S. GAL. SQ.FT. SURF.
 in in

DWG No. 50777 REV. 0